

# **Williamstown Primary School (1183)**

---

## **2008 School Level Report**

---

---

Please check the data in this report. If, after comparing it with your own records, you deem it to be incorrect or incomplete, follow the directions on the following website:

- <http://www.education.vic.gov.au/management/schoolimprovement/performancecd/>  
then select 'School Performance Reports'.
- 
-

# Contents

---

	<b>Page No.</b>
Privacy	3
SFO Density and LBOTE	4
Assessment of Reading Prep to Year 2	5-6
Teacher Judgments against the VELs	7-15
NAPLAN - Reading	16
- Writing	17
- Numeracy	18
AIM - Reading	19
- Mathematics	20
Teacher Assessment of Student Progress (PSD students)	21-22
Enrolment	23
Student Absence	24
Opinion Surveys - Parent	25
- Staff	26
Performance & Development Culture	27
Staff Sick Leave	28
Teaching Staff Retention	29
Bank Balances	30

## Privacy

---

When reporting on the school's performance to the school community, care must be taken to avoid the disclosure of information that can directly or indirectly identify an individual. This may be a particular issue when reporting on the achievement of specific cohorts of students or the opinions of staff where there are small numbers.

In situations where privacy cannot be assured, schools may wish to report on the mean result or provide a written comment on school, year level or cohort performance.

Where the School Level Report is provided to school council members as part of any annual reporting process, or used for discussion on a school's performance, such as in consultation with the school community in the school self-evaluation process, it is important to remind school community members of their duty to only use this information for the purpose it was provided, and that the material must be kept confidential.

It is important to note that information that identifies an individual or can be used with other readily available information to identify a person is now protected by the *Information Privacy Act 2000* (<http://www.education.vic.gov.au/about/deptpolicies/informationprivacy.htm>).

---

# SFO Density and LBOTE

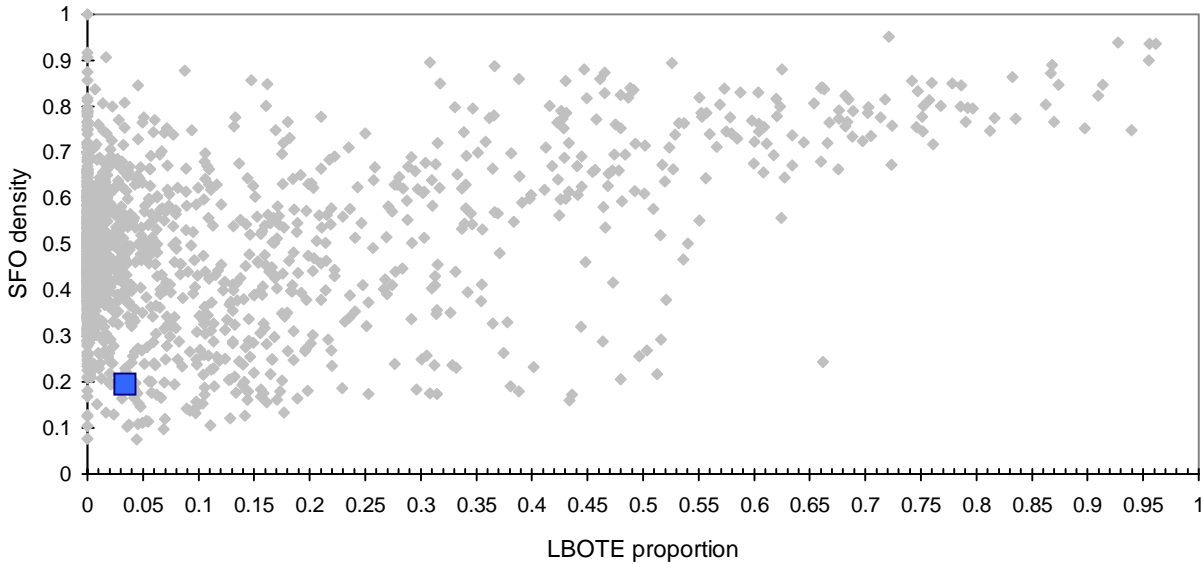
School no: 1183

School name: Williamstown Primary School

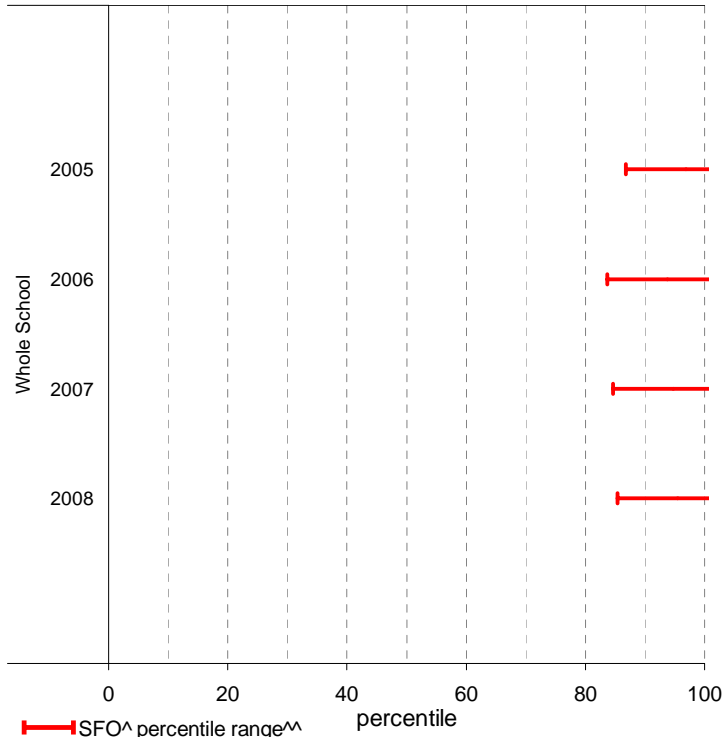
Explanation: The chart below plots the school's 2008 SFO (Student Family Occupation) density<sup>^</sup> and LBOTE (Language Background Other Than English) proportion\* against that of all government schools. This school is highlighted as a square on the chart.

	2001	2002	2003	2004	2005	2006	2007	2008
SFO density <sup>^</sup> :					0.19	0.20	0.19	0.20
LBOTE proportion*:	0.05	0.04	0.05	0.03	0.03	0.04	0.05	0.03

School's 2008 SFO density and LBOTE proportion against that of all government schools



School's SFO<sup>^</sup> percentile range<sup>^^</sup> over time



Notes: <sup>^</sup> The higher the SFO density, the lower the SFO percentile and the lower the socio-economic status (SES).  
<sup>^^</sup> The school's SFO percentile range shows the 20% of schools with an SFO Density most like this school.  
\* From 2007, a student is LBOTE if either the student or one parent/guardian speaks a language other than English at home. Prior to 2007, a student is LBOTE if the student or one of the parents was born in a non-English speaking country.

## Assessment of Reading: Prep to Year 2

School no: 1183

School name: Williamstown Primary School

Explanation: Students' ability to read unsighted text is assessed at the end of each year. The data presented here includes 'deemed not capable' students.

More detailed information (including data where deemed not capable students are excluded) is available in the Assessment of Reading report, available from the School Performance Reports website.

Source of data: Data transmitted from school to DEECD via an online web-form.

	Prep										Year 1										Year 2												
	School									State	School									State	School									State			
	2004		2005		2006		2007		2008		2008	2004		2005		2006		2007		2008		2008	2004		2005		2006		2007		2008		2008
	(No.)	%	(No.)	%	(No.)	%	(No.)	%	(No.)	%	%	(No.)	%	(No.)	%	(No.)	%	(No.)	%	(No.)	%	%	(No.)	%	(No.)	%	(No.)	%	(No.)	%	%		
<b>Level 1</b>																																	
100%	(54)	78.3	(40)	50.6	(64)	79.0	(61)	79.2	(78)	77.2	69.0	(60)	92.3	(60)	92.3	(77)	91.7	(75)	92.6	(74)	93.7	94.7											
90-99%	(12)	17.4	(35)	44.3	(15)	18.5	(12)	15.6	(23)	22.8	25.4	(5)	7.7	(5)	7.7	(7)	8.3	(5)	6.2	(5)	6.3	4.7											
80-89%	(2)	2.9	(3)	3.8	(1)	1.2					2.3											0.2											
51-79%			(1)	1.3	(1)	1.2	(4)	5.2			1.5											0.2											
50% or below	(1)	1.4									1.7					(1)	1.2					0.3											
Total	(69)	100.0	(79)	100.0	(81)	100.0	(77)	100.0	(101)	100.0	100.0	(65)	100.0	(65)	100.0	(84)	100.0	(81)	100.0	(79)	100.0	100.0											
<b>Subtotal 90-100%</b>	<b>(66)</b>	<b>95.7</b>	<b>(75)</b>	<b>94.9</b>	<b>(79)</b>	<b>97.5</b>	<b>(73)</b>	<b>94.8</b>	<b>(101)</b>	<b>100.0</b>	<b>94.5</b>	<b>(65)</b>	<b>100.0</b>	<b>(65)</b>	<b>100.0</b>	<b>(84)</b>	<b>100.0</b>	<b>(80)</b>	<b>98.8</b>	<b>(79)</b>	<b>100.0</b>	<b>99.4</b>											
<b>Level 5</b>																																	
100%	(36)	52.2	(22)	27.8	(42)	51.9	(24)	31.2	(46)	45.5	45.3	(44)	67.7	(41)	63.1	(62)	73.8	(53)	65.4	(55)	69.6	81.0	(51)	76.1	(48)	71.6	(51)	76.1	(59)	71.1	(77)	92.8	90.4
90-99%	(28)	40.6	(41)	51.9	(29)	35.8	(41)	53.2	(37)	36.6	36.1	(20)	30.8	(23)	35.4	(21)	25.0	(27)	33.3	(24)	30.4	16.9	(16)	23.9	(19)	28.4	(16)	23.9	(24)	28.9	(6)	7.2	8.8
80-89%	(5)	7.2	(8)	10.1	(6)	7.4	(3)	3.9	(6)	5.9	5.2	(1)	1.5			(1)	1.2					0.8											
51-79%			(2)	2.5	(1)	1.2	(5)	6.5	(5)	5.0	3.6											0.4											
50% or below			(6)	7.6	(3)	3.7	(4)	5.2	(7)	6.9	9.8			(1)	1.5		(1)	1.2				1.0											
Total	(69)	100.0	(79)	100.0	(81)	100.0	(77)	100.0	(101)	100.0	100.0	(65)	100.0	(65)	100.0	(84)	100.0	(81)	100.0	(79)	100.0	100.0	(67)	100.0	(67)	100.0	(67)	100.0	(83)	100.0	(83)	100.0	100.0
<b>Subtotal 90-100%</b>	<b>(64)</b>	<b>92.8</b>	<b>(63)</b>	<b>79.7</b>	<b>(71)</b>	<b>87.7</b>	<b>(65)</b>	<b>84.4</b>	<b>(83)</b>	<b>82.2</b>	<b>81.3</b>	<b>(64)</b>	<b>98.5</b>	<b>(64)</b>	<b>98.5</b>	<b>(83)</b>	<b>98.8</b>	<b>(80)</b>	<b>98.8</b>	<b>(79)</b>	<b>100.0</b>	<b>97.9</b>	<b>(67)</b>	<b>100.0</b>	<b>(67)</b>	<b>100.0</b>	<b>(67)</b>	<b>100.0</b>	<b>(83)</b>	<b>100.0</b>	<b>(83)</b>	<b>100.0</b>	<b>99.2</b>
<b>Level 15</b>																																	
100%											37.1	(21)	32.3	(9)	13.8	(9)	10.7	(15)	18.5	(18)	22.8	49.2	(29)	43.3	(27)	40.3	(17)	25.4	(29)	34.9	(53)	63.9	62.9
90-99%											49.2	(38)	58.5	(45)	69.2	(57)	67.9	(59)	72.8	(54)	68.4	49.2	(38)	56.7	(38)	56.7	(48)	71.6	(52)	62.7	(28)	33.7	33.2
80-89%											6.3	(3)	4.6	(7)	10.8	(14)	16.7	(5)	6.2	(5)	6.3	6.3				(1)	1.5	(1)	1.2	(2)	2.4	1.8	
51-79%											3.0	(1)	1.5	(2)	3.1	(1)	1.2	(1)	1.2	(2)	2.5	3.0			(1)	1.5	(1)	1.2	(1)	1.2	0.8		
50% or below											4.3	(2)	3.1	(2)	3.1	(3)	3.6	(1)	1.2			4.3			(1)	1.5					1.4		
Total											100.0	(65)	100.0	(65)	100.0	(84)	100.0	(81)	100.0	(79)	100.0	100.0	(67)	100.0	(67)	100.0	(67)	100.0	(83)	100.0	(83)	100.0	100.0
<b>Subtotal 90-100%</b>											<b>86.4</b>	<b>(59)</b>	<b>90.8</b>	<b>(54)</b>	<b>83.1</b>	<b>(66)</b>	<b>78.6</b>	<b>(74)</b>	<b>91.4</b>	<b>(72)</b>	<b>91.1</b>	<b>86.4</b>	<b>(67)</b>	<b>100.0</b>	<b>(65)</b>	<b>97.0</b>	<b>(65)</b>	<b>97.0</b>	<b>(81)</b>	<b>97.6</b>	<b>(81)</b>	<b>97.6</b>	<b>96.1</b>
<b>Level 20</b>																																	
100%											47.4											47.4	(22)	32.8	(22)	32.8	(20)	29.9	(29)	34.9	(42)	50.6	47.4
90-99%											47.1											47.1	(45)	67.2	(43)	64.2	(45)	67.2	(50)	60.2	(40)	48.2	47.1
80-89%											2.4											2.4				(1)	1.5	(1)	1.2	(1)	1.2	2.4	
51-79%											0.9											0.9				(1)	1.5	(2)	2.4		0.9		
50% or below											2.2											2.2				(2)	3.0	(1)	1.2		2.2		
Total											100.0	(67)	100.0	(67)	100.0	(67)	100.0	(83)	100.0	(83)	100.0	100.0	(67)	100.0	(67)	100.0	(67)	100.0	(83)	100.0	(83)	100.0	100.0
<b>Subtotal 90-100%</b>											<b>94.5</b>	<b>(67)</b>	<b>100.0</b>	<b>(65)</b>	<b>97.0</b>	<b>(65)</b>	<b>97.0</b>	<b>(79)</b>	<b>95.2</b>	<b>(82)</b>	<b>98.8</b>	<b>94.5</b>	<b>(67)</b>	<b>100.0</b>	<b>(65)</b>	<b>97.0</b>	<b>(65)</b>	<b>97.0</b>	<b>(79)</b>	<b>95.2</b>	<b>(82)</b>	<b>98.8</b>	<b>94.5</b>

	2004	2005	2006	2007	2008	2004	2005	2006	2007	2008	2004	2005	2006	2007	2008
No. of students DNC <sup>1</sup> :	0	0	2	4	0	1	0	1	1	0	0	2	0	1	1
No. of students at risk <sup>2</sup> :	3	4	2	4	0	1	1	1	1	0	0	2	2	2	2

**Notes:**

<sup>1</sup> Students can be DNC (deemed not capable) only if they meet one of the conditions (insufficient English, receiving D&I funding, insufficient attendance at the school or referred from Reading Recovery) AND read below the minimum standard.

<sup>2</sup> The number of students at risk is the number of students reading at less than 90% accuracy at Level 1 for Prep, Level 5 for Year 1 or Level 15 for Year 2.

# Assessment of Reading: Prep to Year 2

School no: 1183

School name: Williamstown Primary School

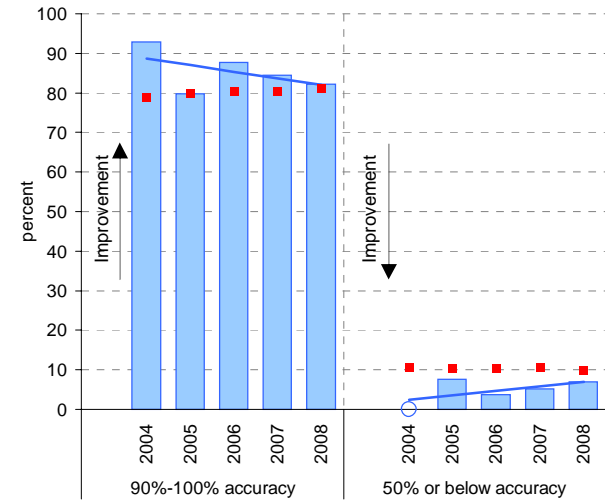
Explanation: Students' ability to read unsighted text is assessed at the end of each year.

Source of data: Data transmitted from school to DEECD via an online web-form.

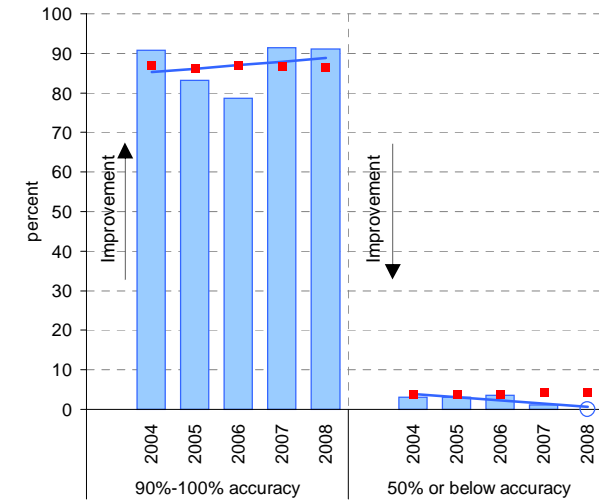
Notes: \* The school trendline is being trialled. It is only plotted when there is data for each calendar year.

^ This data is highly skewed, with a lot of schools obtaining the best possible result, particularly in Year 2. The maximum achievable percentile is therefore significantly less than 100.

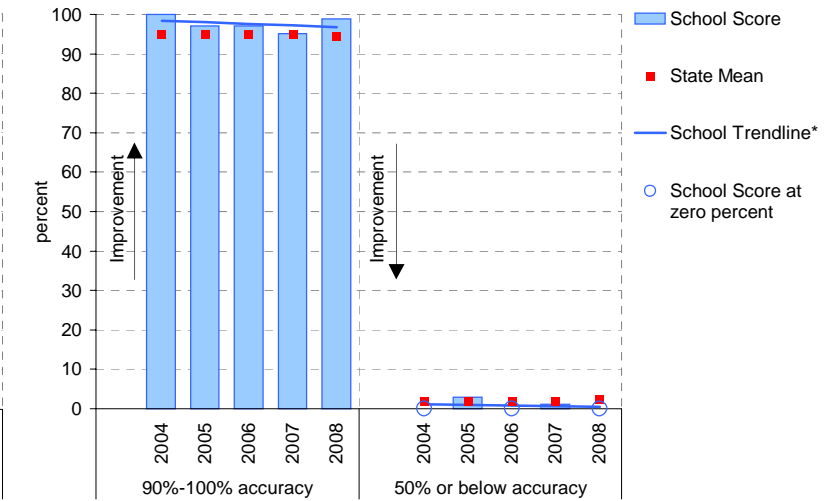
Year level: Prep  
Text level: Level 5



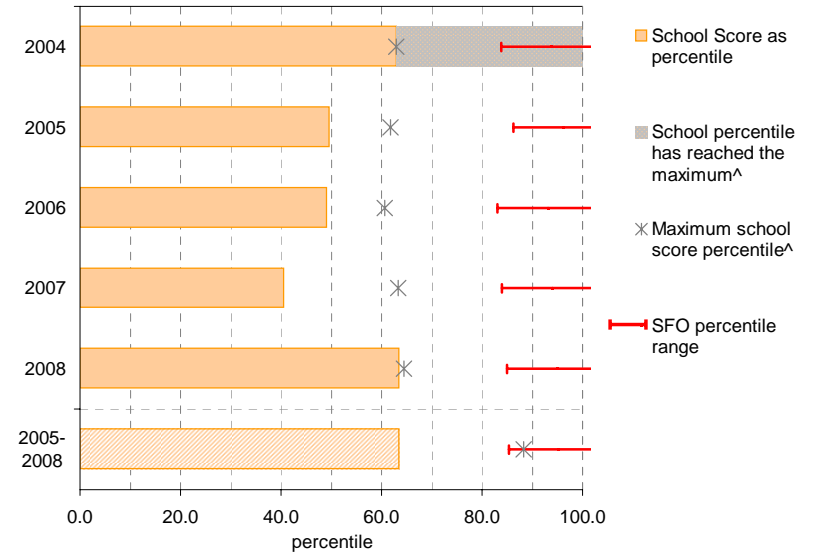
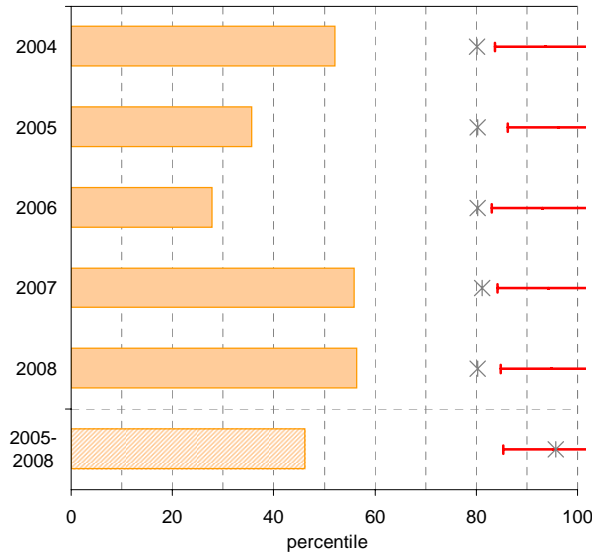
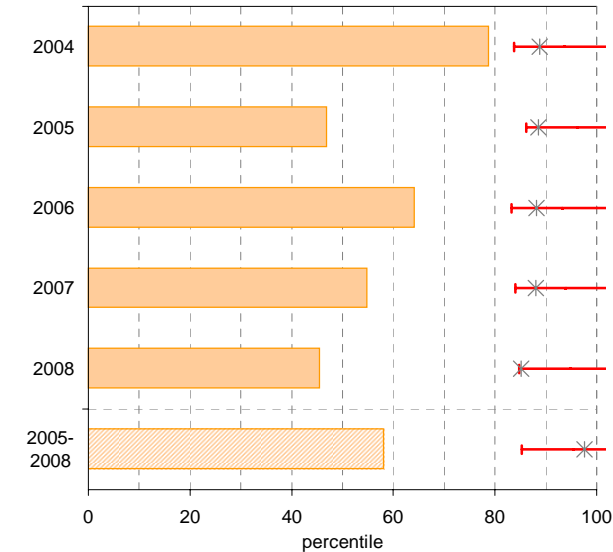
Year level: Year 1  
Text level: Level 15



Year level: Year 2  
Text level: Level 20



90%-100% accuracy as percentile against SFO percentile range



# Teacher Judgments against the VELS - Year levels Prep-6 combined

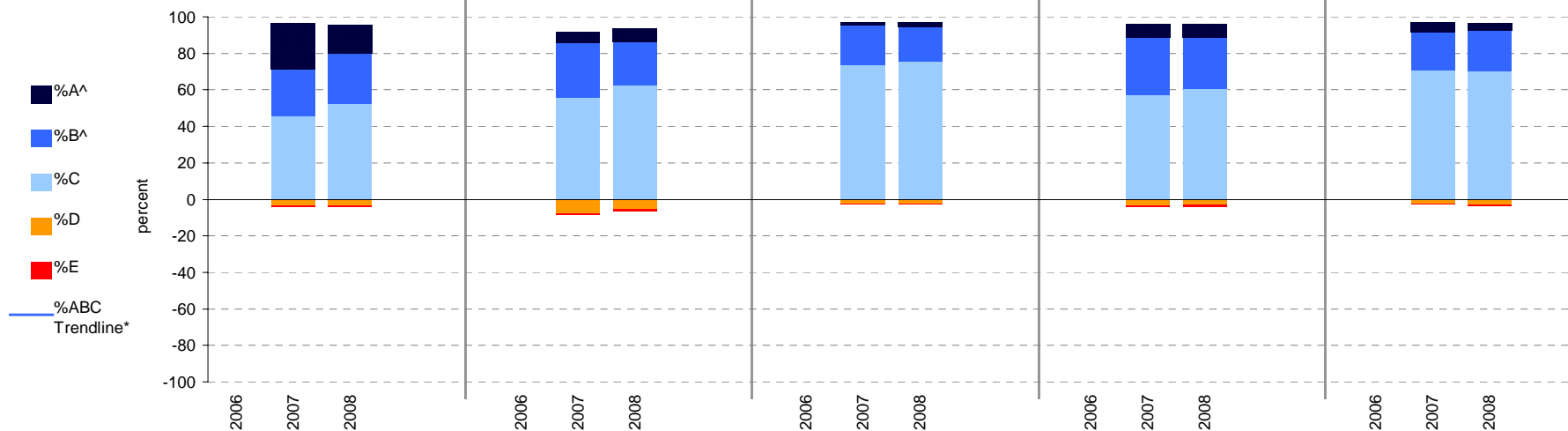
School no: 1183

School name: Williamstown Primary School

Source of data: Data retrieved electronically from CASES21.

Explanation: Teacher judgments of student achievement against the VELS.

Year Levels:	Reading						Writing					Speaking & Listening					Number					Measurement, Chance & Data									
	total students	% A^	% B^	% C	% D	% E	total students	% A^	% B^	% C	% D	% E	total students	% A^	% B^	% C	% D	% E	total students	% A^	% B^	% C	% D	% E	total students	% A^	% B^	% C	% D	% E	
Prep-6	2006																														
(combined)	2007	506	25	26	45	3	0	506	6	30	56	8	1	505	1	22	74	3	0	519	7	31	57	3	1	519	5	21	71	3	1
	2008	560	16	27	53	4	1	560	7	24	62	5	1	560	2	19	76	3	1	564	7	28	61	3	1	564	4	23	70	3	1



Notes: \* The school trendline is only plotted when there is data for each calendar year.

^ The cutoff between grades A and B changed in 2007. Further information is available on the following website:  
<http://www.education.vic.gov.au/studentlearning/studentreports/schools/whatsnew.htm>.

# Teacher Judgments against the VELS - English (primary)

School no: 1183

School name: Williamstown Primary School

Source of data: Data retrieved electronically from CASES21.

Explanation: Teacher judgments of student achievement against the VELS.

Notes: \* The school trendline is only plotted when there is data for each calendar year.

\*\* In 2006, approx. 850 schools assessed their students against the 0.25 VELS scale. 2006 benchmarks are therefore based on a subset of schools.

^ The cutoff between grades A and B changed in 2007. Further information is available on the following website: <http://www.education.vic.gov.au/studentlearning/studentreports/schools/whatsnew.htm>.

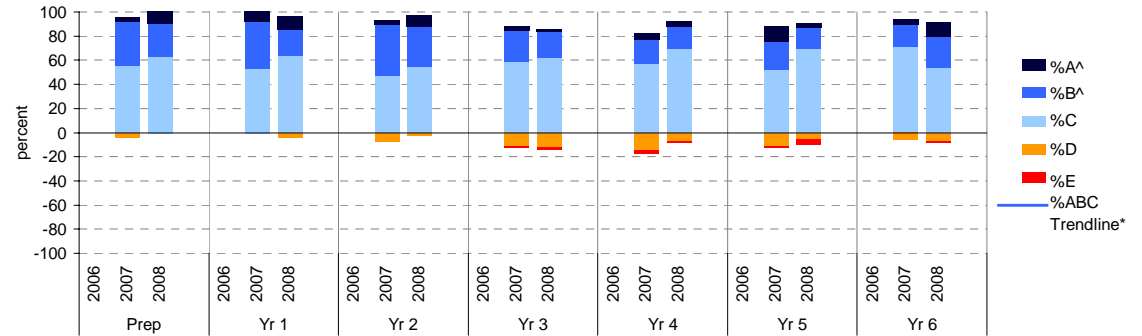
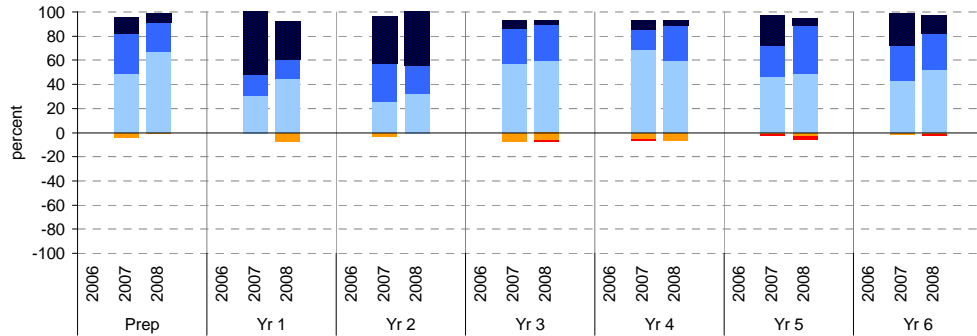
^^ 2008 benchmarks and percentiles will be calculated in August, when data from all schools has been submitted.

## Reading

	total		% of students by grade					Mean Score	
	students		A^	B^	C	D	E	School	State**
Prep	2006							1.01	
	2007	74	14	34	49	4	0	1.05	1.01
	2008	103	8	24	67	1	0	1.02	
Yr 1	2006							1.57	
	2007	74	51	18	31	0	0	1.83	1.57
	2008	78	32	15	45	8	0	1.65	
Yr 2	2006							2.04	
	2007	81	40	31	26	4	0	2.26	2.06
	2008	81	44	23	32	0	0	2.28	
Yr 3	2006							2.49	
	2007	65	6	29	57	8	0	2.52	2.50
	2008	84	4	30	60	6	1	2.54	

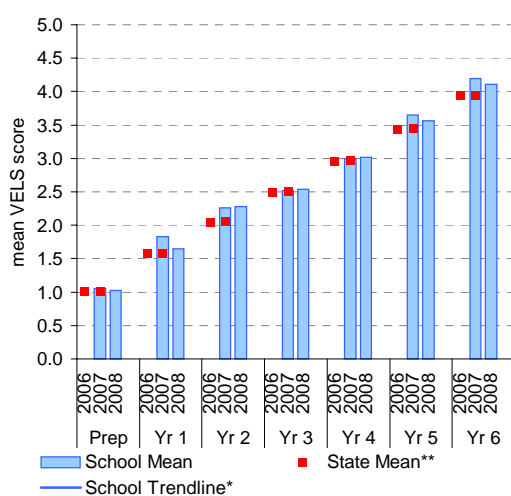
## Writing

	total		% of students by grade					Mean Score	
	students		A^	B^	C	D	E	School	State**
Prep	2006							0.97	
	2007	74	4	36	55	4	0	1.00	0.97
	2008	103	10	27	63	0	0	1.05	
Yr 1	2006							1.47	
	2007	74	8	39	53	0	0	1.61	1.49
	2008	78	10	22	64	4	0	1.56	
Yr 2	2006							1.95	
	2007	81	2	43	47	7	0	2.06	1.96
	2008	81	10	33	54	2	0	2.09	
Yr 3	2006							2.42	
	2007	65	3	26	58	11	2	2.46	2.43
	2008	84	2	21	62	12	2	2.42	

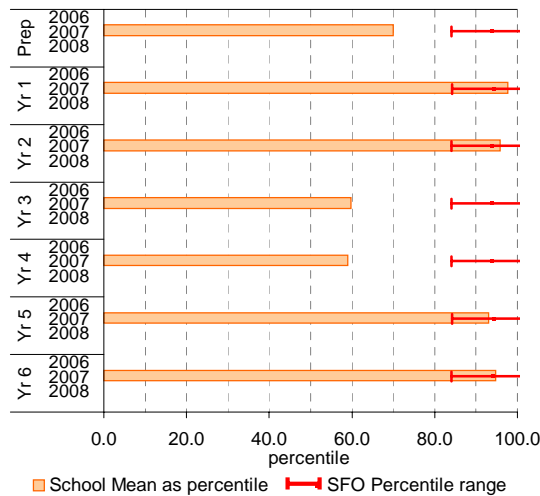


## Reading

School Mean against State Mean^^

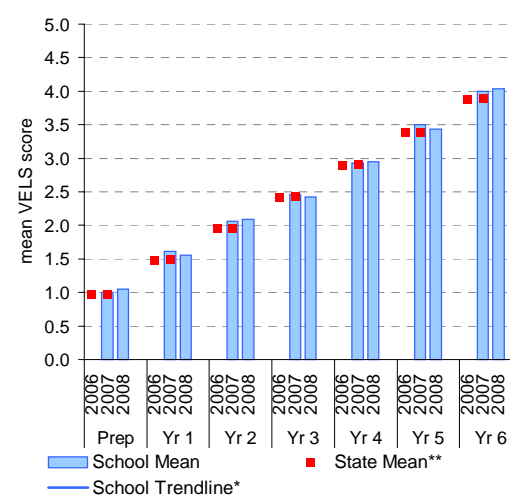


School Mean as percentile against SFO percentile range^^

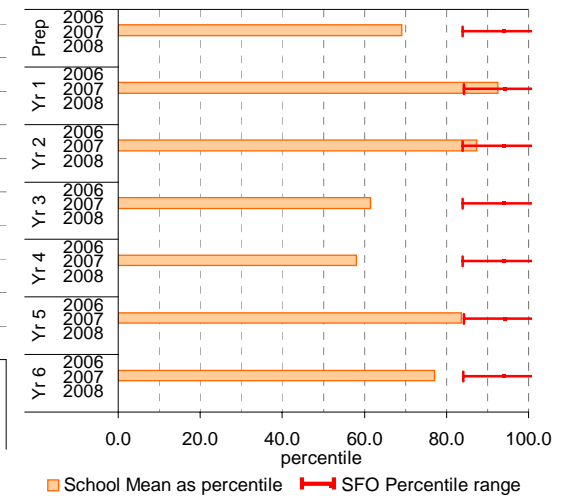


## Writing

School Mean against State Mean^^



School Mean as percentile against SFO percentile range^^



# Teacher Judgments against the VELS - English (primary)

School no: 1183

School name: Williamstown Primary School

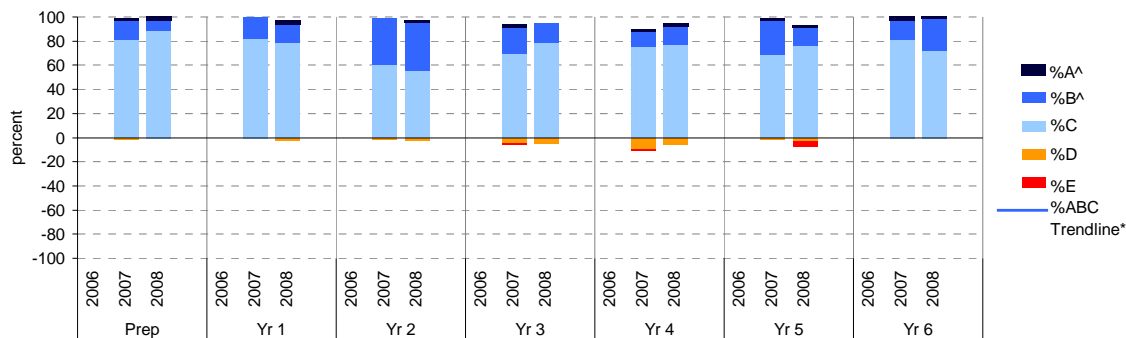
Source of data: Data retrieved electronically from CASES21.

Explanation: Teacher judgments of student achievement against the VELS.

Notes: \* The school trendline is only plotted when there is data for each calendar year.  
 \*\* In 2006, approx. 850 schools assessed their students against the 0.25 VELS scale. 2006 benchmarks are therefore based on a subset of schools.  
 ^ The cutoff between grades A and B changed in 2007. Further information is available on the following website: <http://www.education.vic.gov.au/studentlearning/studentreports/schools/whatsnew.htm>.  
 ^^ 2008 benchmarks and percentiles will be calculated in August, when data from all schools has been submitted.

## Speaking and Listening

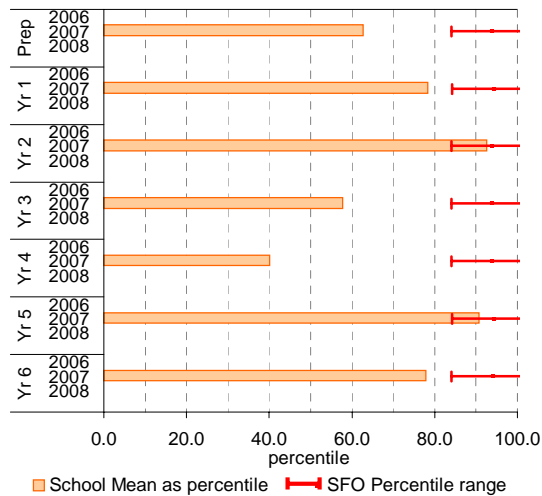
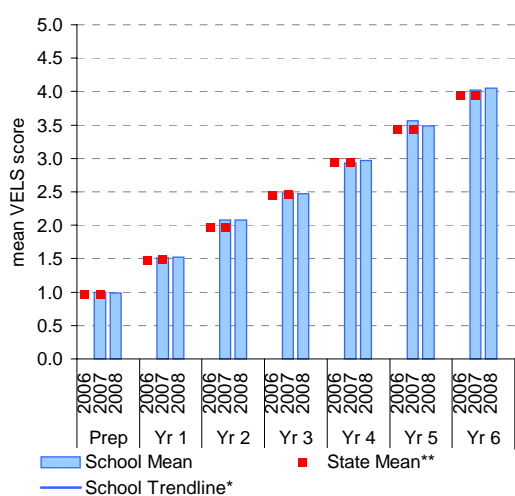
	total students	% of students by grade					Mean Score			total students	% of students by grade					Mean Score			
		A^	B^	C	D	E	School	State**			A^	B^	C	D	E	School	State**		
Prep	2006						0.97	0.97	Yr 4	2006						2.94	2.94		
	2007	73	1	16	81	1	0	0.99		0.97	2007	74	1	12	76	9	1	2.93	2.94
	2008	103	3	9	88	0	0	0.99		0.97	2008	73	3	15	77	5	0	2.97	2.97
Yr 1	2006						1.48	1.48	Yr 5	2006						3.43	3.43		
	2007	74	0	18	82	0	0	1.52		1.48	2007	73	1	29	68	1	0	3.56	3.43
	2008	78	4	15	78	3	0	1.52		1.48	2008	72	1	15	76	3	4	3.48	3.48
Yr 2	2006						1.98	1.98	Yr 6	2006						3.93	3.93		
	2007	81	0	38	60	1	0	2.07		1.98	2007	65	3	15	82	0	0	4.03	3.94
	2008	81	2	40	56	2	0	2.07		1.98	2008	69	1	26	72	0	0	4.05	4.05
Yr 3	2006						2.45	2.45	Yr 6	2006						3.93	3.93		
	2007	65	3	22	69	5	2	2.48		2.46	2007	65	3	15	82	0	0	4.03	3.94
	2008	84	0	17	79	5	0	2.47		2.47	2008	69	1	26	72	0	0	4.05	4.05



## Speaking and Listening

School Mean against State Mean^^

School Mean as percentile against SFO percentile range^^



# Teacher Judgments against the VELS - Mathematics (primary)

School no: 1183

School name: Williamstown Primary School

Source of data: Data retrieved electronically from CASES21.

Explanation: Teacher judgments of student achievement against the VELS.

Notes: \* The school trendline is only plotted when there is data for each calendar year.

\*\* In 2006, approx. 850 schools assessed their students against the 0.25 VELS scale. 2006 benchmarks are therefore based on a subset of schools.

^ The cutoff between grades A and B changed in 2007. Further information is available on the following website: <http://www.education.vic.gov.au/studentlearning/studentreports/schools/whatsnew.htm>.

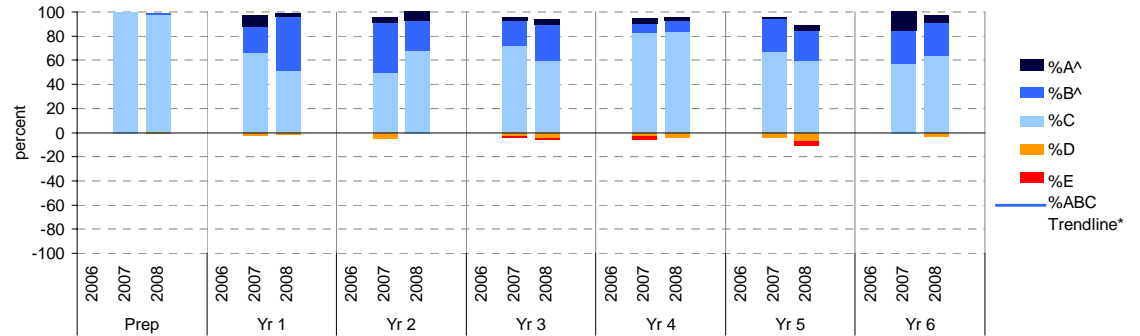
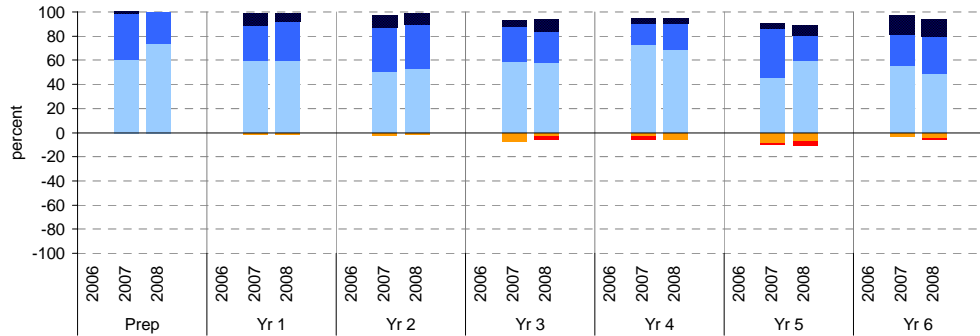
^^ 2008 benchmarks and percentiles will be calculated in August, when data from all schools has been submitted.

## Number

	total		% of students by grade					Mean Score	
	students		A^	B^	C	D	E	School	State**
2006								1.00	
2007	78	1	38	60	0	0	1.03	1.00	
2008	103	0	26	74	0	0	1.00		
2006								1.51	
2007	81	10	30	59	1	0	1.58	1.51	
2008	78	6	33	59	1	0	1.57		
2006								1.99	
2007	83	11	36	51	2	0	2.11	1.99	
2008	85	9	36	53	1	0	2.11		
2006								2.46	
2007	65	5	29	58	8	0	2.50	2.48	
2008	84	11	25	58	4	2	2.52		

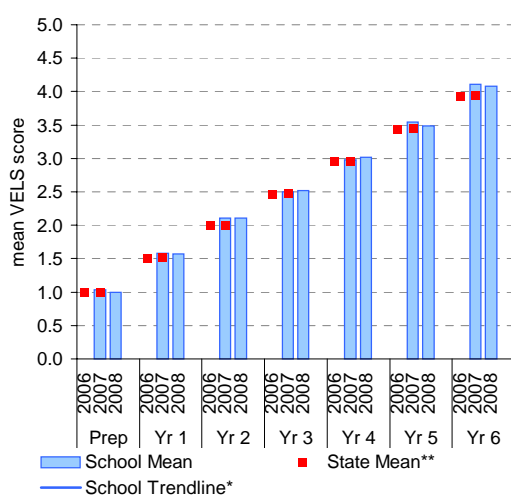
## Measurement, Chance and Data

	total		% of students by grade					Mean Score	
	students		A^	B^	C	D	E	School	State**
2006								0.97	
2007	78	0	0	100	0	0	0.94	0.97	
2008	103	0	2	97	1	0	0.97		
2006								1.48	
2007	81	10	21	67	2	0	1.55	1.49	
2008	78	3	45	51	1	0	1.60		
2006								1.97	
2007	83	4	42	49	5	0	2.09	1.98	
2008	85	7	25	68	0	0	2.07		
2006								2.45	
2007	65	3	20	72	3	2	2.50	2.46	
2008	84	5	30	60	5	1	2.54		

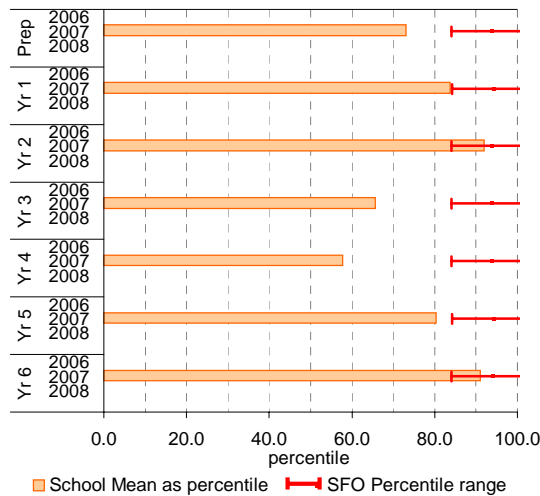


## Number

School Mean against State Mean^^

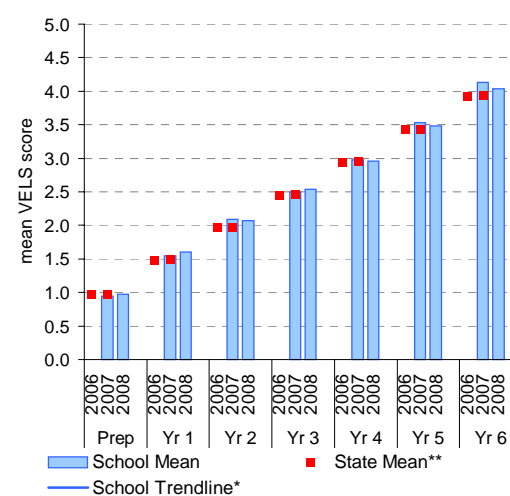


School Mean as percentile against SFO percentile range^^

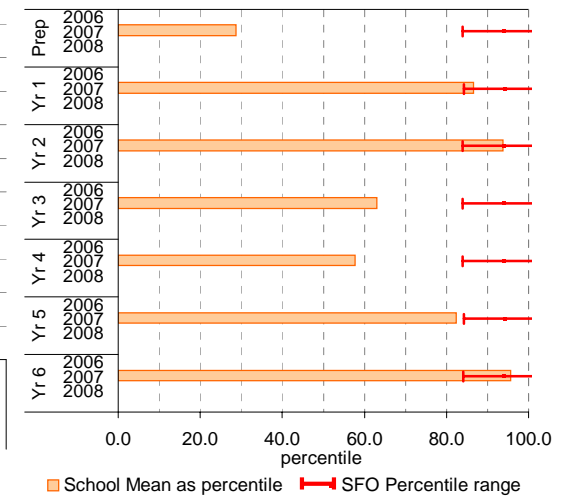


## Measurement, Chance and Data

School Mean against State Mean^^



School Mean as percentile against SFO percentile range^^







# Teacher Judgments against the VELS - English (primary)

School no: 1183  
 School name: Williamstown Primary School  
 Source of data: Data retrieved electronically from CASES21.  
 Explanation: Teacher judgments of student achievement against the VELS.

## Speaking and Listening

Year Level	Year	Total <sup>1</sup>	Assessed <sup>2</sup>	Level 1			Level 2			Level 3			Level 4			Level 5			Level 6			Level 6E			School mean	State mean <sup>*^</sup>	Difference between school and state mean <sup>*^</sup>			
				0.00	0.50	1.00	1.25	1.50	1.75	2.00	2.25	2.50	2.75	3.00	3.25	3.50	3.75	4.00	4.25	4.50	4.75	5.00	5.25	5.50				5.75	6.00	6.25
prep	2008	103	103	10	81		9	3																		0.99				
prep	2007	76	73	1	6	53		12	1																	0.99	0.97	0.03		
yr1	2008	78	78		2	8	53	12	3																			1.52		
prep	2006																												0.97	
yr1	2007	75	74			8	53	13																		1.52	1.48	0.04		
yr2	2008	82	81				2	8	37	32	2																	2.07		
prep	2005																													
yr1	2006																													1.48
yr2	2007	83	81				1	5	44	31																2.07	1.98	0.10		
yr3	2008	84	84					1	3	14	52	14																	2.47	
yr1	2005																													
yr2	2006																													1.98
yr3	2007	65	65				1	1	2	13	32	14	2													2.48	2.46	0.02		
yr4	2008	74	73							2	2	14	42	11	2														2.97	
yr2	2005																													
yr3	2006																													2.45
yr4	2007	74	74					1		5	2	9	47	9	1											2.93	2.94	-0.02		
yr5	2008	72	72							3		2	2	53	11	1													3.48	
yr3	2005																													
yr4	2006																													2.94
yr5	2007	73	73								1	3	47	21	1											3.56	3.43	0.13		
yr6	2008	69	69											5	45	18	1												4.05	
yr4	2005																													
yr5	2006																													3.43
yr6	2007	65	65											7	46	10	2									4.03	3.94	0.09		
yr5	2005																													
yr6	2006																													3.93
yr6	2005																													

shading indicates a 'C' grade (at the expected standard) on the VELS scale.

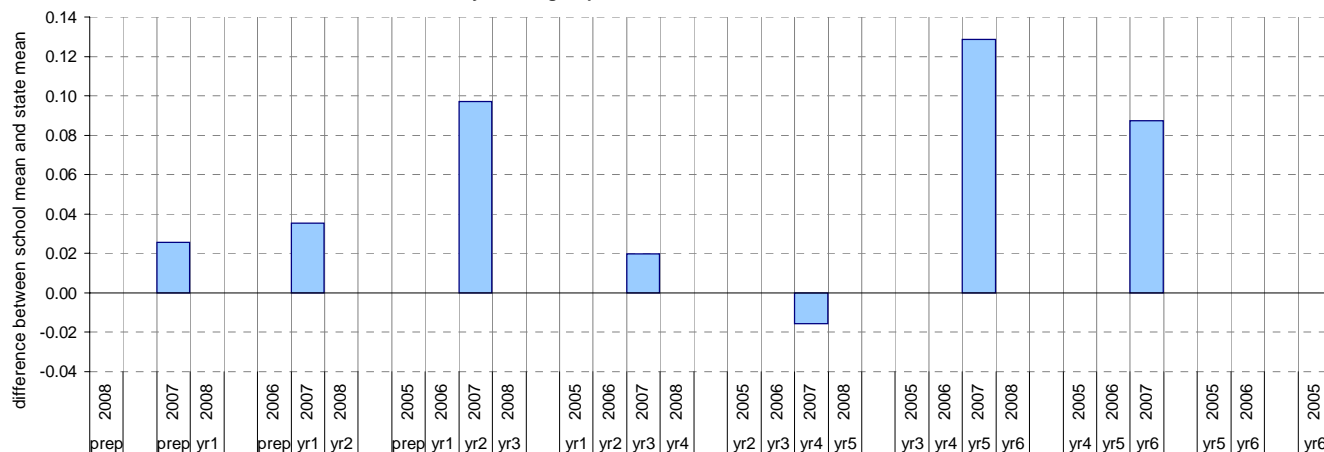
<sup>1</sup> The total number of students eligible to be assessed. This figure will typically match, or be very close to, the Year Level enrolment.

<sup>2</sup> The number of students assessed against the VELS. The difference between this figure and the total (1) should be accounted for by students assessed against Individual Learning Plans and/or the ESL companion in the case of English.

\* In 2006, approx. 850 schools assessed their students against the 0.25 VELS scale. 2006 benchmarks are therefore based on a subset of schools.

^ 2008 benchmarks will be calculated in August, when data from all schools has been submitted.

Difference between school mean and state mean<sup>\*^</sup>, by cohort group





# Teacher Judgments against the VELS - Mathematics (primary)

School no: 1183  
 School name: Williamstown Primary School  
 Source of data: Data retrieved electronically from CASES21.  
 Explanation: Teacher judgments of student achievement against the VELS.

## Measurement, Chance and Data

Year Level	Year	Total <sup>1</sup>	Assessed <sup>2</sup>	Level 1			Level 2			Level 3			Level 4			Level 5			Level 6			Level 6E			School mean	State mean <sup>*^</sup>	Difference between school and state mean <sup>*^</sup>			
				0.00	0.50	1.00	1.25	1.50	1.75	2.00	2.25	2.50	2.75	3.00	3.25	3.50	3.75	4.00	4.25	4.50	4.75	5.00	5.25	5.50				5.75	6.00	6.25
prep	2008	103	103	1	5	95	2																				0.97			
prep	2007	78	78		9	69																					0.94	0.97	-0.03	
yr1	2008	78	78	1	5	35	35	2																					1.60	
prep	2006																													0.97
yr1	2007	81	81		2	13	41	17	8																		1.55	1.49	0.06	
yr2	2008	85	85					10	48	21	6																		2.07	
prep	2005																													
yr1	2006																													1.48
yr2	2007	83	83			4	4	37	35	3																	2.09	1.98	0.11	
yr3	2008	84	84			1	1	3	8	42	25	4																	2.54	
yr1	2005																													
yr2	2006																													1.97
yr3	2007	65	65			1	2	9	38	13	2																2.50	2.46	0.04	
yr4	2008	74	73					1	2	15	46	7	2																2.96	
yr2	2005																													
yr3	2006																													2.45
yr4	2007	74	74			1	1	1	1	5	56	6	3														2.98	2.95	0.03	
yr5	2008	72	72					1	2	3	2	4	39	18	2	1													3.48	
yr3	2005																													
yr4	2006																													2.94
yr5	2007	73	73					1	2	6	43	20	1														3.53	3.43	0.10	
yr6	2008	69	69									1	1	11	33	19	4												4.04	
yr4	2005																													
yr5	2006																													3.42
yr6	2007	65	65											5	32	18	10										4.13	3.93	0.19	
yr5	2005																													
yr6	2006																													3.92
yr6	2005																													

shading indicates a 'C' grade (at the expected standard) on the VELS scale.

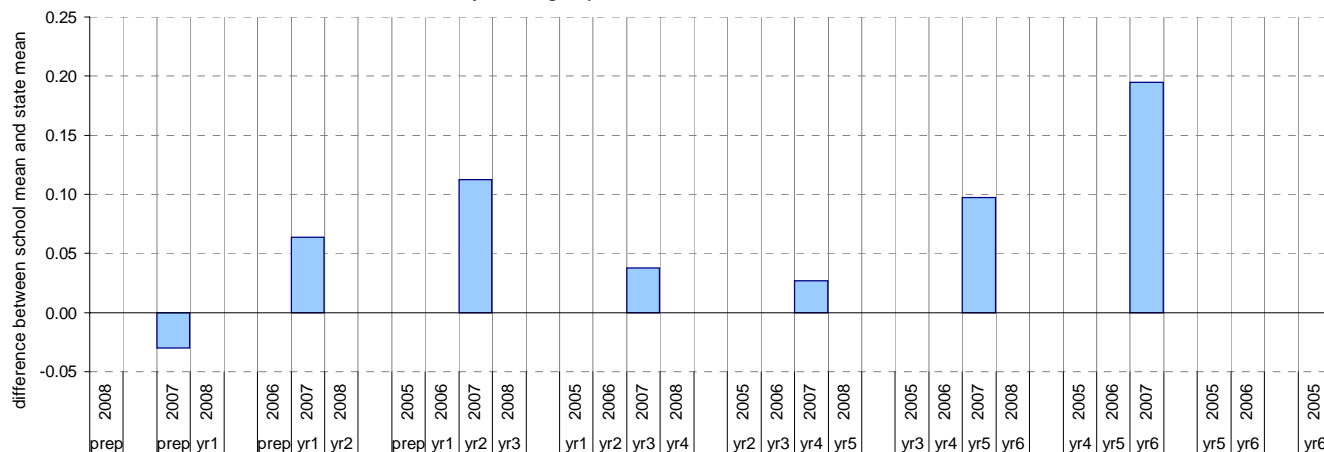
<sup>1</sup> The total number of students eligible to be assessed. This figure will typically match, or be very close to, the Year Level enrolment.

<sup>2</sup> The number of students assessed against the VELS. The difference between this figure and the total (1) should be accounted for by students assessed against Individual Learning Plans and/or the ESL companion in the case of English.

\* In 2006, approx. 850 schools assessed their students against the 0.25 VELS scale. 2006 benchmarks are therefore based on a subset of schools.

^ 2008 benchmarks will be calculated in August, when data from all schools has been submitted.

### Difference between school mean and state mean<sup>\*^</sup>, by cohort group



# NAPLAN Year 3 and 5: Reading

School no: 1183

School name: Williamstown Primary School

Source of data: Victorian Curriculum and Assessment Authority.

Explanation: The National Assessment Program - Literacy and Numeracy (NAPLAN) is conducted each year for students in Years 3, 5, 7 and 9. For more detailed NAPLAN data, refer to the NAPLAN Data Service website at <http://naplands.vcaa.vic.edu.au>. A reference guide for analysing NAPLAN data is available at <http://www.vcaa.vic.edu.au/vcaa/prep10/naplan/schools/analysingnaplandata.pdf>.

Notes: \* % student participation = (students who participated in NAPLAN / February enrolments) \* 100

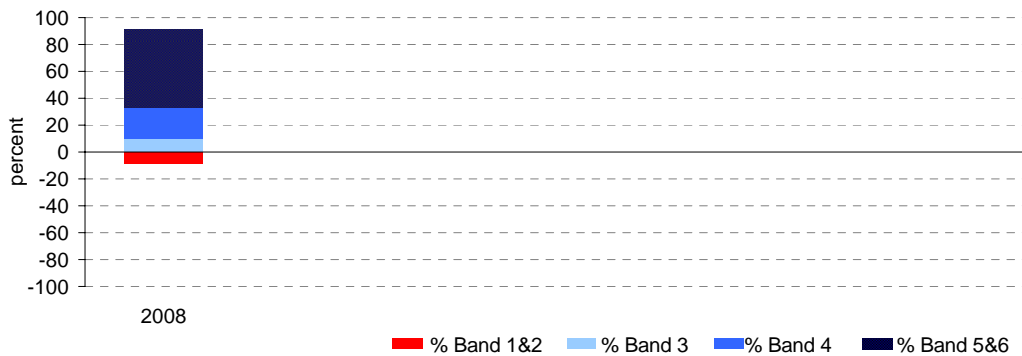
## Year 3

	student participation		Percent of students by NAP Band						Mean Scaled Score	
	(n)	(%)*	Band 1	Band 2	Band 3	Band 4	Band 5	Band 6	School	State
2008	82	100	4	5	10	23	35	23	434.4	415.8

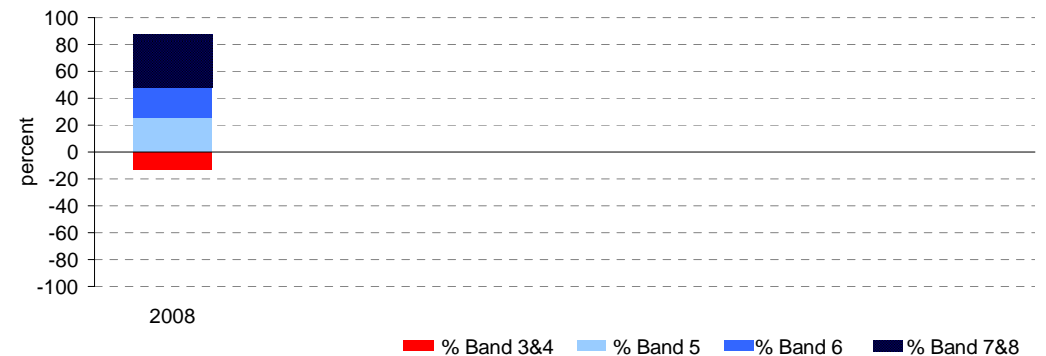
## Year 5

	student participation		Percent of students by NAP Band						Mean Scaled Score	
	(n)	(%)*	Band 3	Band 4	Band 5	Band 6	Band 7	Band 8	School	State
2008	71	97	4	9	25	23	23	17	510.3	492.1

Percent of students by NAP Band

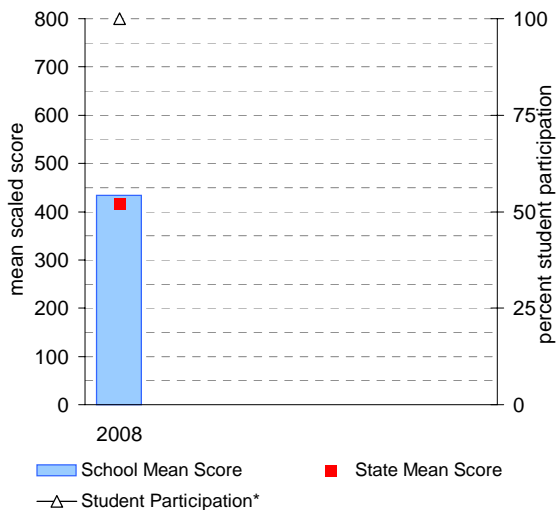


Percent of students by NAP Band

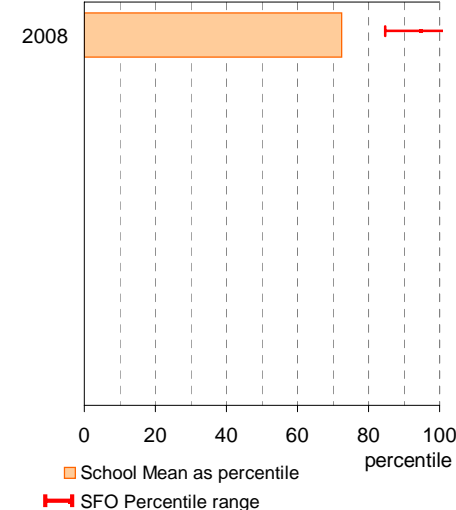


## Year 3

School Mean against State Mean, including Participation

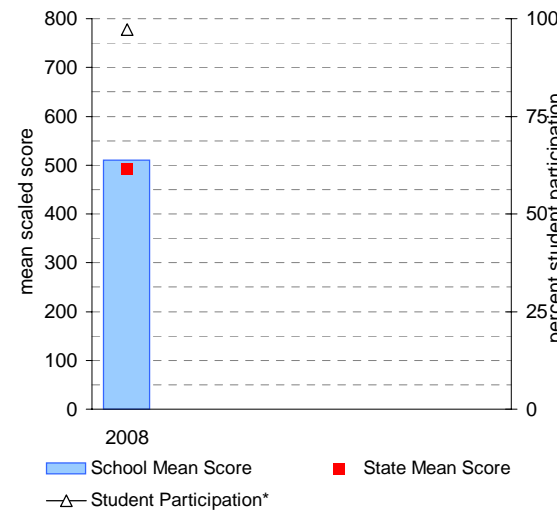


School Mean as percentile against SFO percentile range

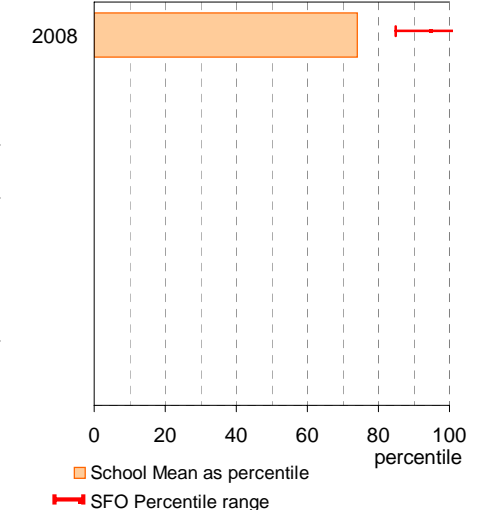


## Year 5

School Mean against State Mean, including Participation



School Mean as percentile against SFO percentile range



# NAPLAN Year 3 and 5: Writing

School no: 1183

School name: Williamstown Primary School

Source of data: Victorian Curriculum and Assessment Authority.

Explanation: The National Assessment Program - Literacy and Numeracy (NAPLAN) is conducted each year for students in Years 3, 5, 7 and 9. For more detailed NAPLAN data, refer to the NAPLAN Data Service website at <http://naplands.vcaa.vic.edu.au>. A reference guide for analysing NAPLAN data is available at <http://www.vcaa.vic.edu.au/vcaa/prep10/naplan/schools/analysingnaplandata.pdf>.

Notes: \* % student participation = (students who participated in NAPLAN / February enrolments) \* 100

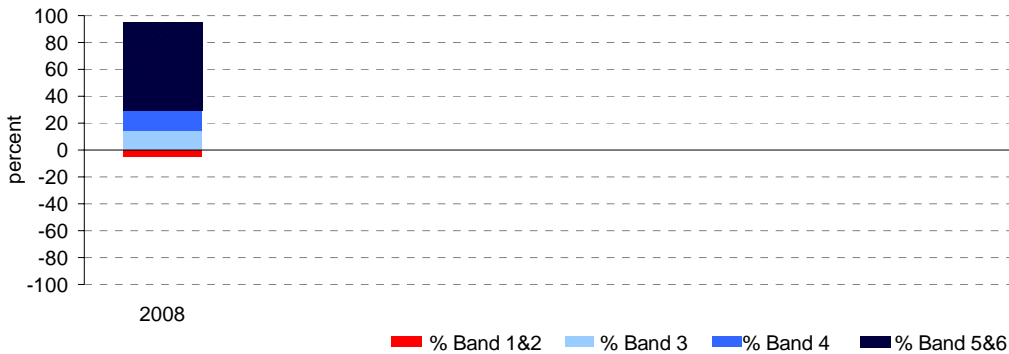
## Year 3

	student participation		Percent of students by NAP Band						Mean Scaled Score	
	(n)	(%)*	Band 1	Band 2	Band 3	Band 4	Band 5	Band 6	School	State
2008	82	100	1	4	15	15	32	34	443.6	421.2

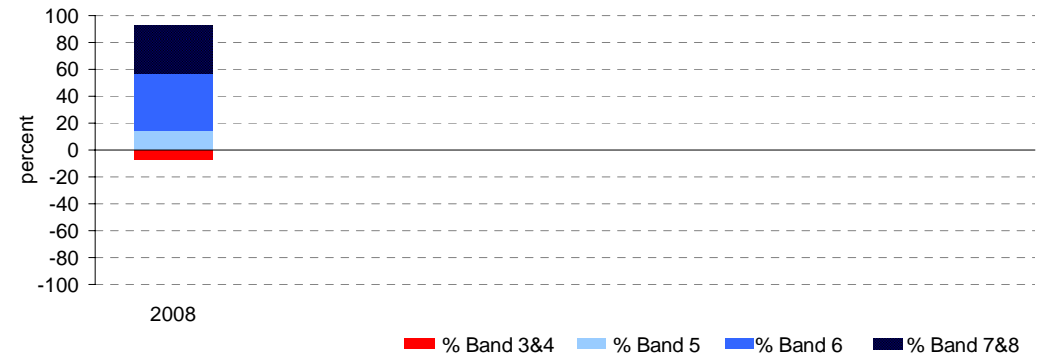
## Year 5

	student participation		Percent of students by NAP Band						Mean Scaled Score	
	(n)	(%)*	Band 3	Band 4	Band 5	Band 6	Band 7	Band 8	School	State
2008	70	96	3	4	14	43	20	16	511.7	496.0

Percent of students by NAP Band

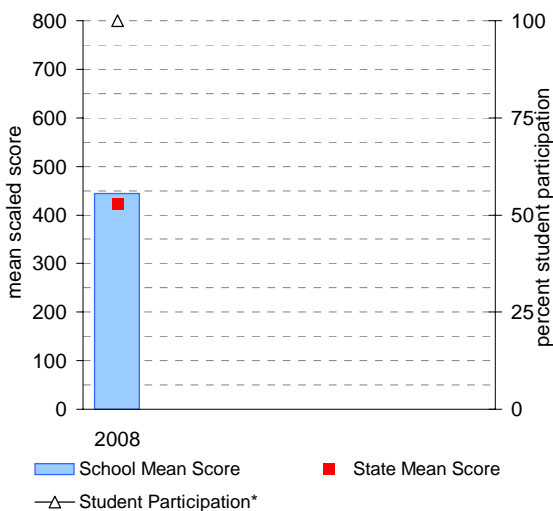


Percent of students by NAP Band

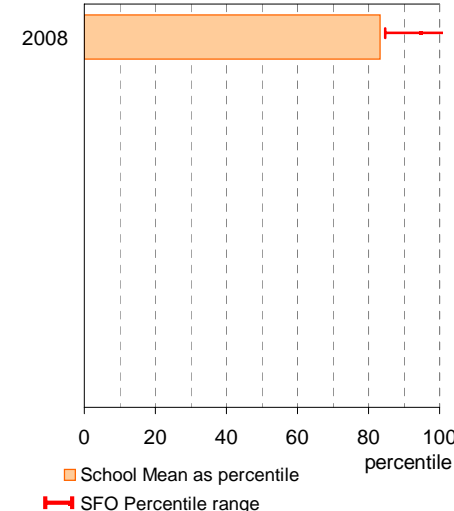


## Year 3

School Mean against State Mean, including Participation

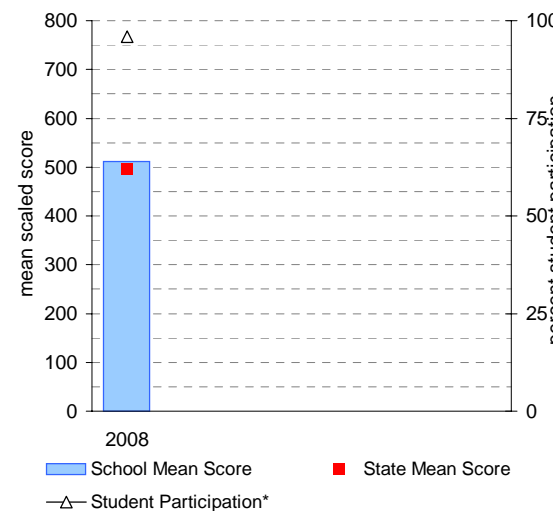


School Mean as percentile against SFO percentile range

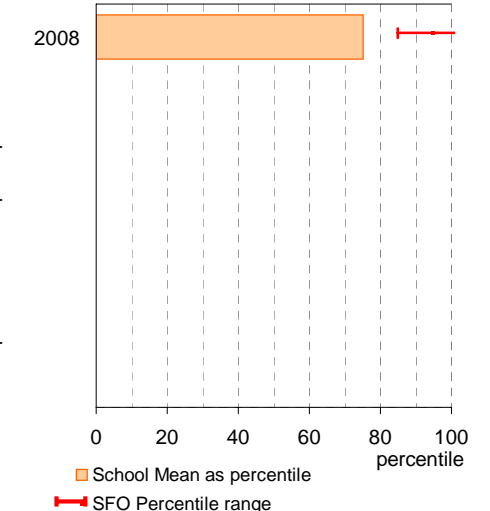


## Year 5

School Mean against State Mean, including Participation



School Mean as percentile against SFO percentile range



# NAPLAN Year 3 and 5: Numeracy

School no: 1183

School name: Williamstown Primary School

Source of data: Victorian Curriculum and Assessment Authority.

Explanation: The National Assessment Program - Literacy and Numeracy (NAPLAN) is conducted each year for students in Years 3, 5, 7 and 9. For more detailed NAPLAN data, refer to the NAPLAN Data Service website at <http://naplands.vcaa.vic.edu.au>. A reference guide for analysing NAPLAN data is available at <http://www.vcaa.vic.edu.au/vcaa/prep10/naplan/schools/analysingnaplandata.pdf>.

Notes: \* % student participation = (students who participated in NAPLAN / February enrolments) \* 100

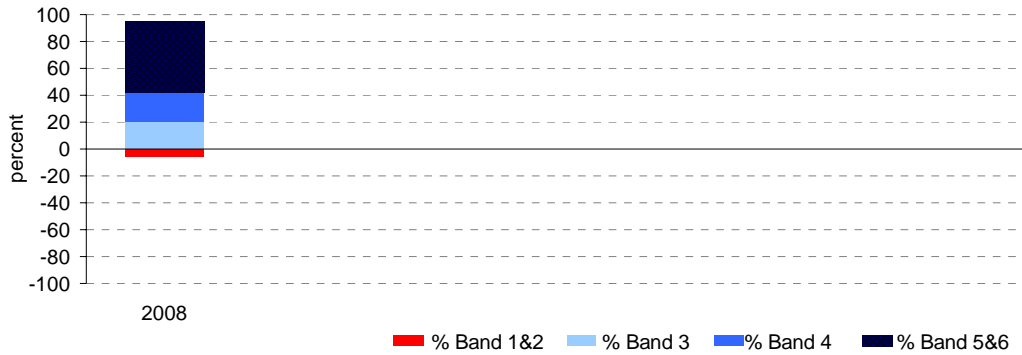
## Year 3

	student participation		Percent of students by NAP Band						Mean Scaled Score	
	(n)	(%)*	Band 1	Band 2	Band 3	Band 4	Band 5	Band 6	School	State
2008	79	96	1	4	20	22	32	22	428.2	416.1

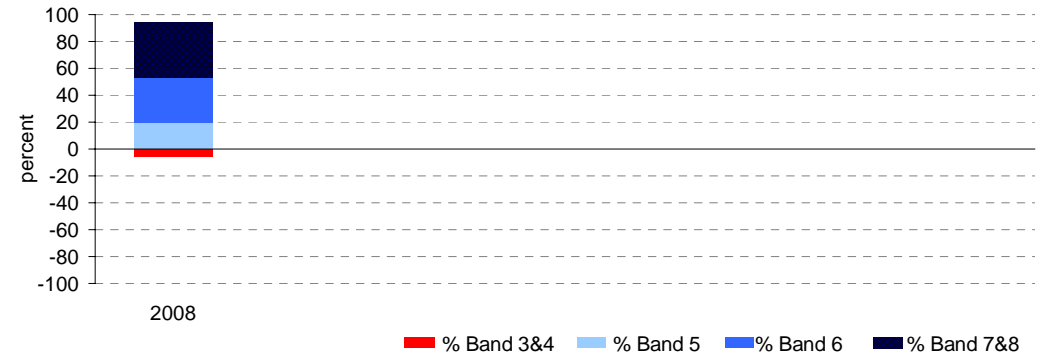
## Year 5

	student participation		Percent of students by NAP Band						Mean Scaled Score	
	(n)	(%)*	Band 3	Band 4	Band 5	Band 6	Band 7	Band 8	School	State
2008	70	96	1	4	20	33	34	7	513.9	487.8

Percent of students by NAP Band

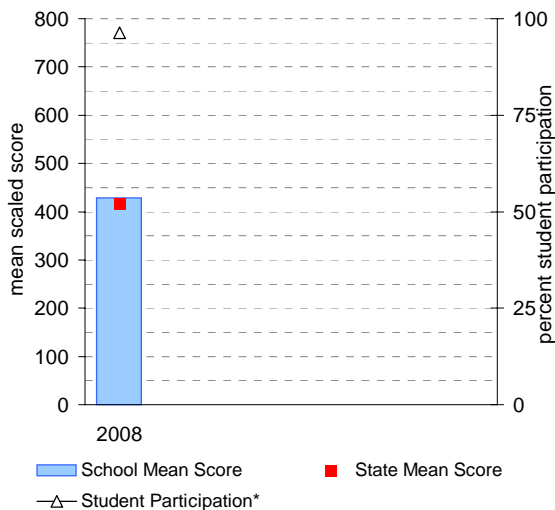


Percent of students by NAP Band

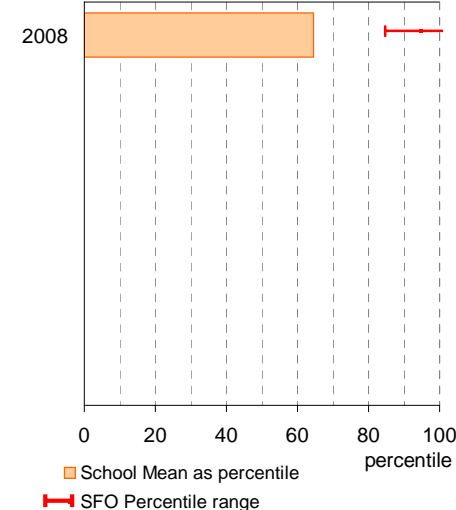


## Year 3

School Mean against State Mean, including Participation

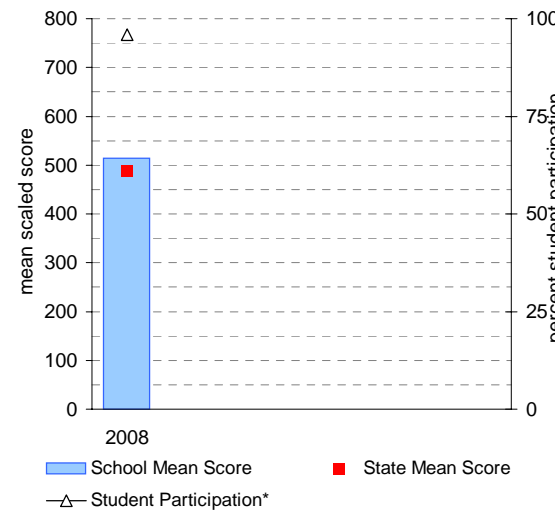


School Mean as percentile against SFO percentile range

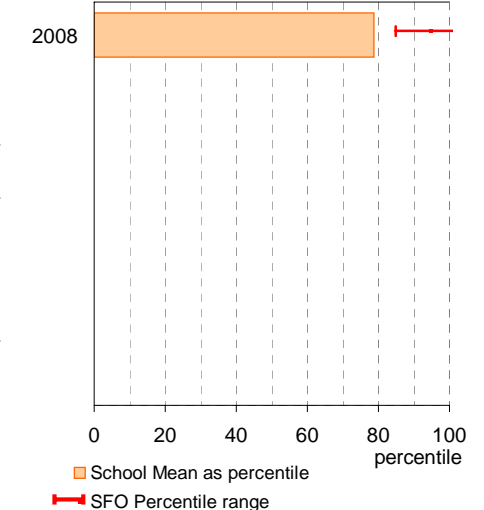


## Year 5

School Mean against State Mean, including Participation



School Mean as percentile against SFO percentile range



# AIM Year 3 and 5: Reading

School no: 1183

School name: Williamstown Primary School

Source of data: Victorian Curriculum and Assessment Authority.

Explanation: The Achievement Improvement Monitor (AIM) was a statewide assessment program conducted each year up until and including 2007 for students in Years 3, 5, 7 and 9. This has now been replaced by NAPLAN. For more detailed AIM data, refer to the AIM Data Service website at <http://aimds.vcaa.vic.edu.au>.

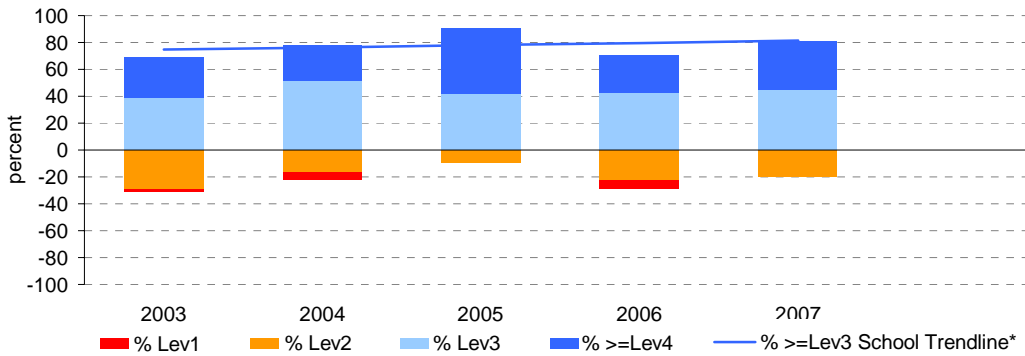
Notes: \* The school trendline is only plotted when there is data for each calendar year.

\*\* % student participation = (students who participated in AIM / Feb enrolments) \* 100

## Year 3

	student participation		Percent of students by VELs level							Mean CSF / VELs Score	
	(n)	(%)**	Lev1	Lev2	Lev3	Lev4	Lev5	Lev6	Lev6E	School	State
2003	65	94	2	29	38	31	0	0	0	2.5	2.3
2004	50	81	6	16	52	26	0	0	0	2.5	2.3
2005	55	83	0	9	42	49	0	0	0	2.8	2.4
2006	65	96	6	23	43	28	0	0	0	2.4	2.3
2007	58	87	0	19	45	36	0	0	0	2.6	2.3

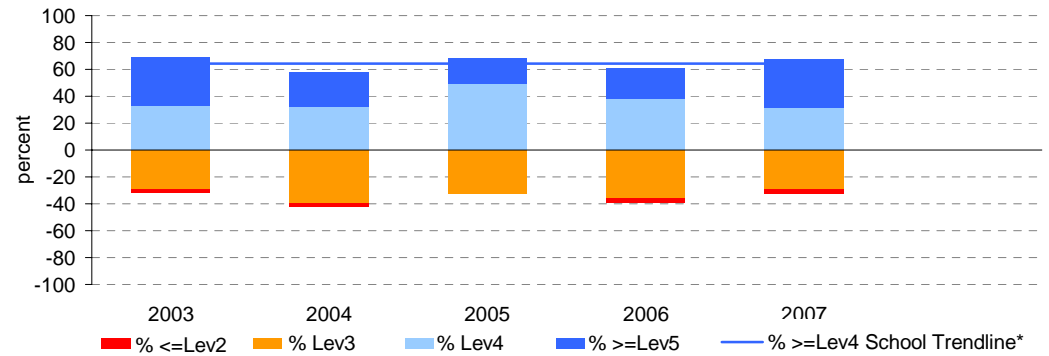
Percent of students by VELs level



## Year 5

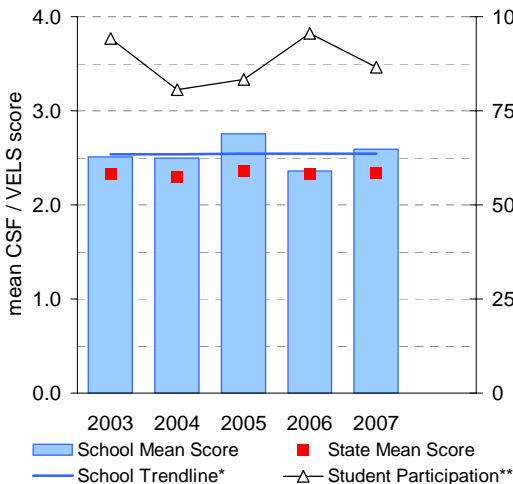
	student participation		Percent of students by VELs level							Mean CSF / VELs Score	
	(n)	(%)**	Lev1	Lev2	Lev3	Lev4	Lev5	Lev6	Lev6E	School	State
2003	76	93	0	3	29	33	36	0	0	3.5	3.2
2004	43	96	0	2	40	33	26	0	0	3.3	3.2
2005	63	95	0	0	32	49	19	0	0	3.3	3.2
2006	58	94	0	3	36	38	22	0	0	3.3	3.1
2007	64	86	0	3	30	31	36	0	0	3.4	3.2

Percent of students by VELs level

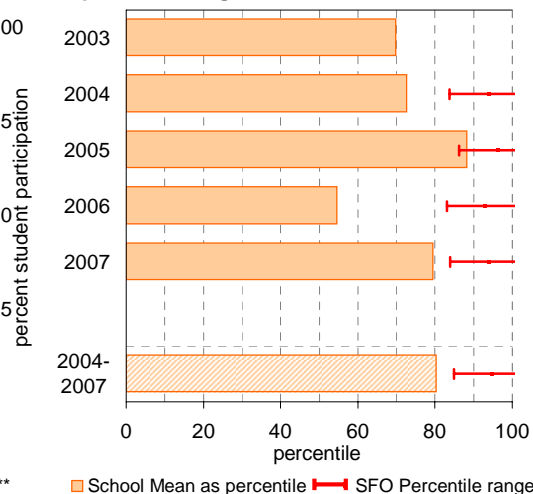


## Year 3

School Mean against State Mean, including Participation

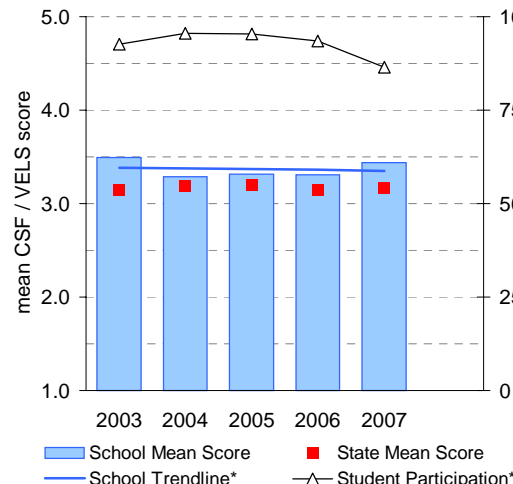


School Mean as percentile against SFO percentile range

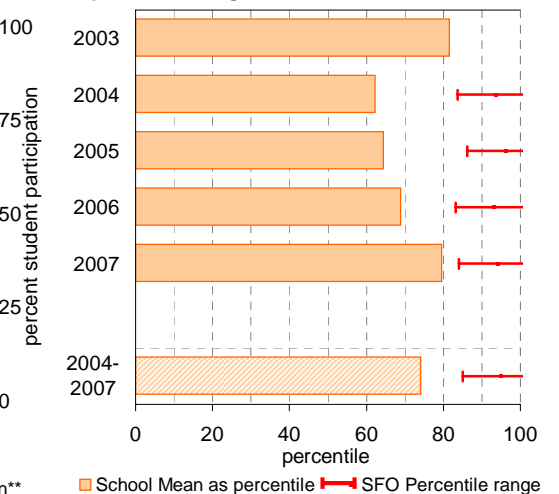


## Year 5

School Mean against State Mean, including Participation



School Mean as percentile against SFO percentile range



# AIM Year 3 and 5: Number

School no: 1183

School name: Williamstown Primary School

Source of data: Victorian Curriculum and Assessment Authority.

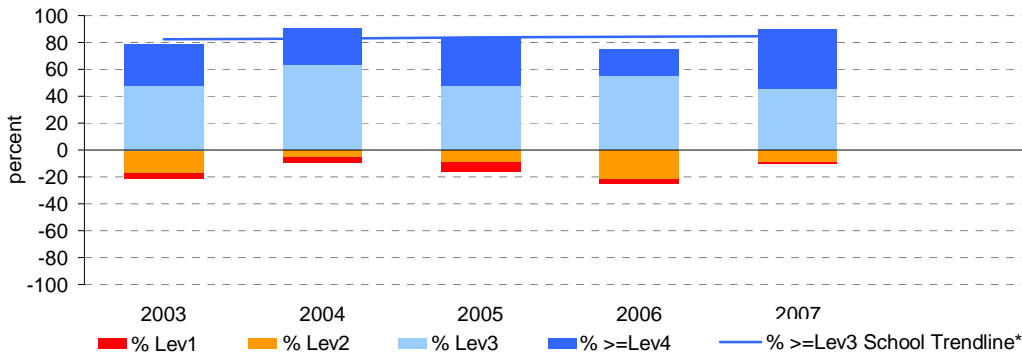
Explanation: The Achievement Improvement Monitor (AIM) was a statewide assessment program conducted each year up until and including 2007 for students in Years 3, 5, 7 and 9. This has now been replaced by NAPLAN. For more detailed AIM data, refer to the AIM Data Service website at <http://aimds.vcaa.vic.edu.au>.

Notes: \* The school trendline is only plotted when there is data for each calendar year.  
\*\* % student participation = (students who participated in AIM / Feb enrolments) \* 100

## Year 3

	student participation		Percent of students by VELs level							Mean CSF / VELs Score	
	(n)	(%)**	Lev1	Lev2	Lev3	Lev4	Lev5	Lev6	Lev6E	School	State
2003	65	94	5	17	48	31	0	0	0	2.5	2.4
2004	55	89	4	5	64	27	0	0	0	2.7	2.4
2005	56	85	7	9	48	36	0	0	0	2.5	2.4
2006	64	94	3	22	55	20	0	0	0	2.3	2.4
2007	59	88	2	8	46	44	0	0	0	2.7	2.4

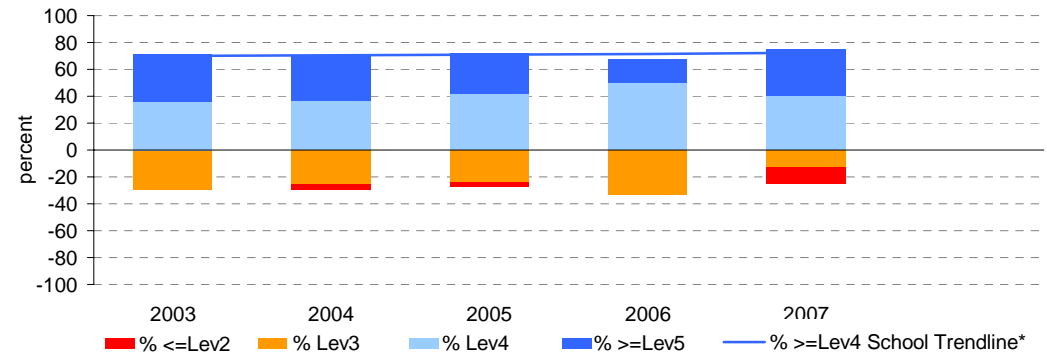
Percent of students by VELs level



## Year 5

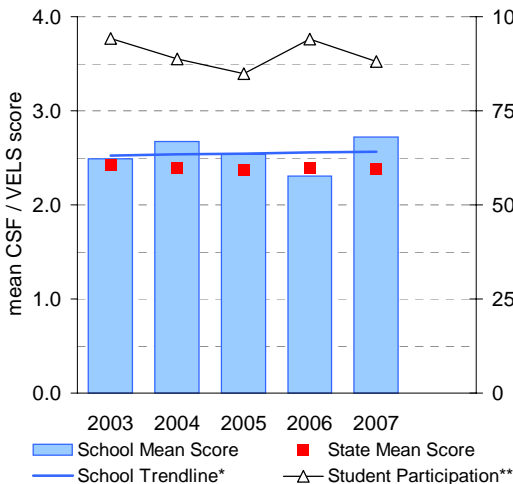
	student participation		Percent of students by VELs level							Mean CSF / VELs Score	
	(n)	(%)**	Lev1	Lev2	Lev3	Lev4	Lev5	Lev6	Lev6E	School	State
2003	76	93	0	0	29	36	36	0	0	3.5	3.1
2004	43	96	0	5	26	37	33	0	0	3.4	3.2
2005	62	94	0	3	24	42	31	0	0	3.4	3.2
2006	58	94	0	0	33	50	17	0	0	3.4	3.2
2007	60	81	0	12	13	40	35	0	0	3.6	3.2

Percent of students by VELs level

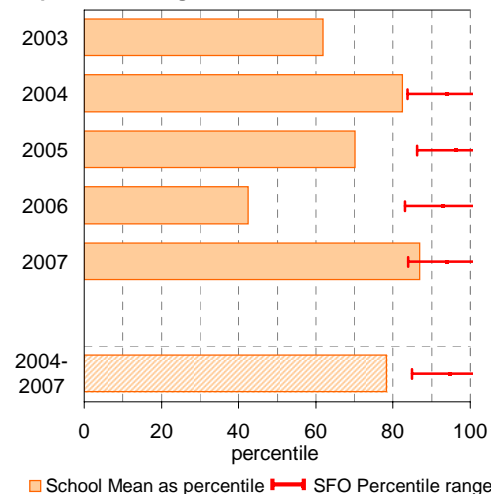


## Year 3

School Mean against State Mean, including Participation

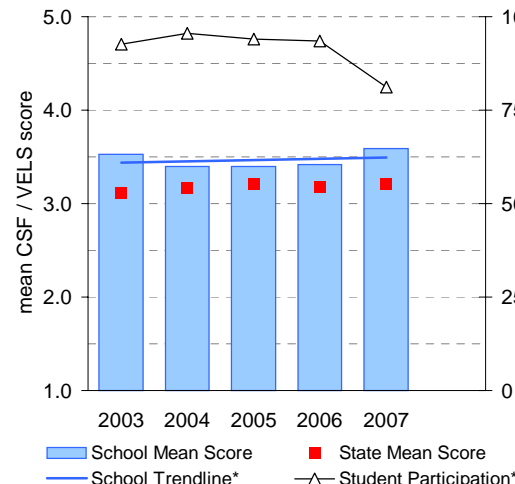


School Mean as percentile against SFO percentile range

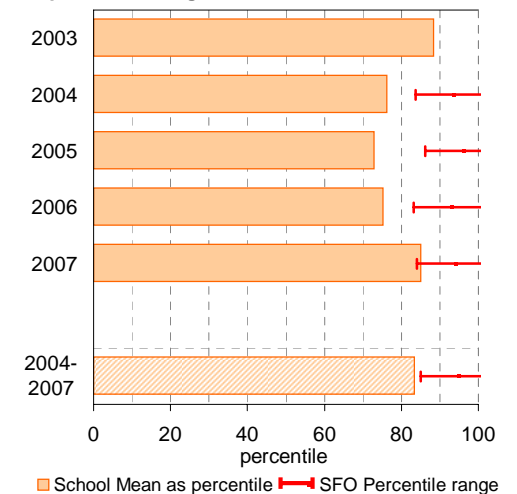


## Year 5

School Mean against State Mean, including Participation



School Mean as percentile against SFO percentile range



# Teacher Assessment of Student Progress (PSD students)

**School no:** 1183

**School name:** Williamstown Primary School

**Explanation:** Teachers assess their students' progress against the 8 VELS Domains / CSF KLAs using a 6-point scale (students in special schools and those who cannot be assessed against the VELS / CSF).

**Source of data:** Data transmitted from school to DEECD via an online web-form.

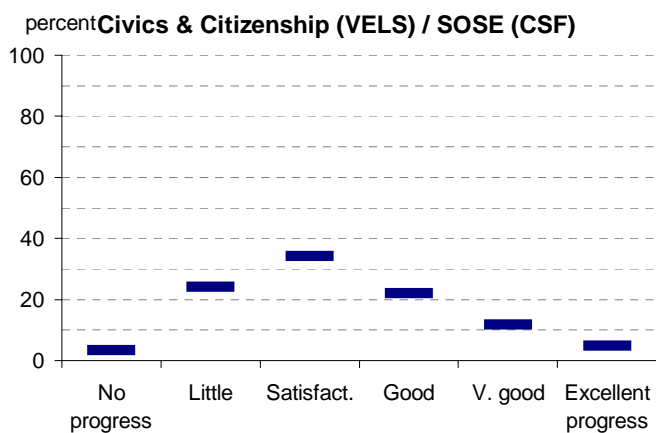
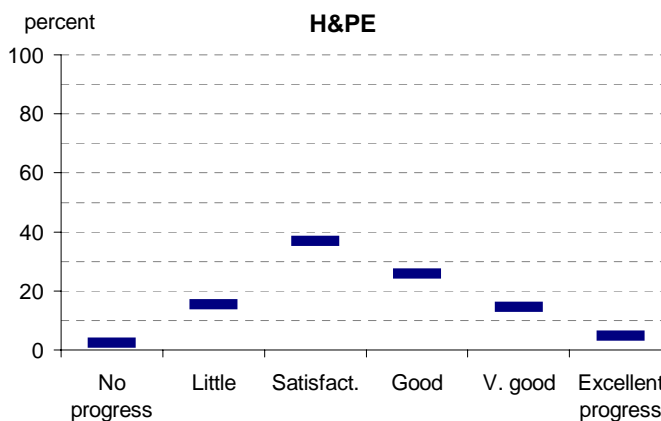
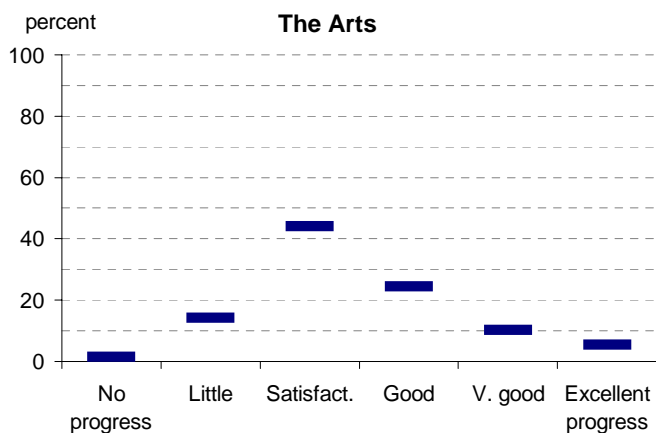
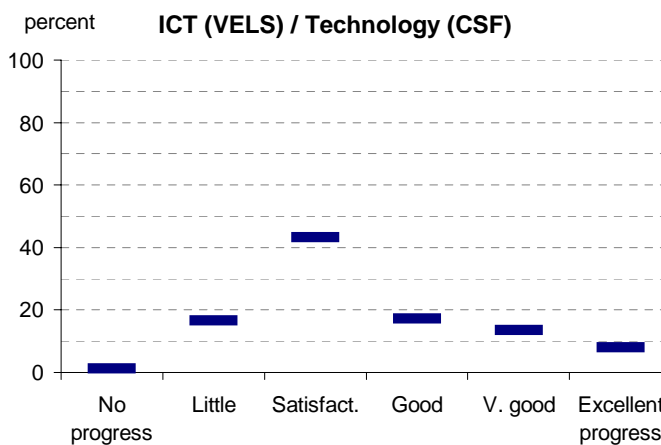
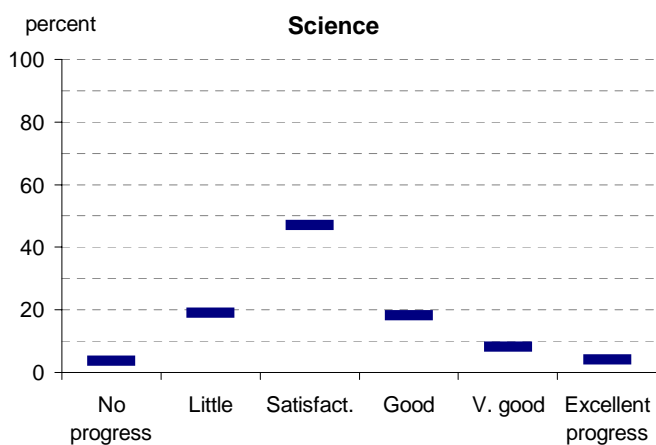
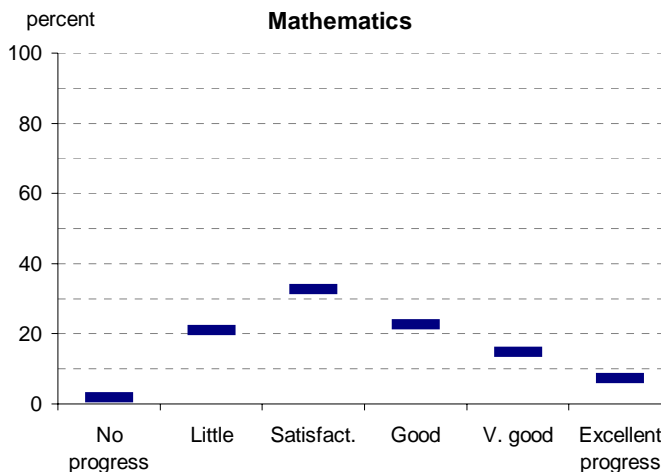
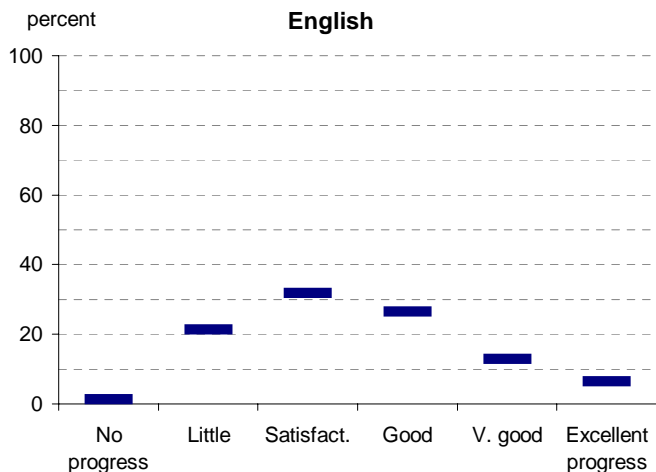
	No progress (%)	Little progress (%)	Satisfactory progress (%)	Good progress (%)	Very good progress (%)	Excellent progress (%)	Total students assessed <sup>1</sup> (no.)
<b>2004 (by CSF KLA)</b>							
English							
Mathematics							
Science							
Technology							
The Arts							
H&PE							
SOSE							
<b>2005 (by CSF KLA)</b>							
English							
Mathematics							
Science							
Technology							
The Arts							
H&PE							
SOSE							
<b>2006 (by VELS Domain)</b>							
English							
Mathematics							
Science							
ICT							
The Arts							
H&PE							
Civics & Citizenship							
<b>2007 (by VELS Domain)</b>							
English							
Mathematics							
Science							
ICT							
The Arts							
H&PE							
Civics & Citizenship							
<b>2008 (by VELS Domain)</b>							
English							
Mathematics							
Science							
ICT							
The Arts							
H&PE							
Civics & Citizenship							
<b>2007 Primary state benchmarks (by VELS Domain)*</b>							
English	1	21	32	26	13	6	
Mathematics	2	21	33	23	15	7	
Science	4	19	47	18	8	4	
ICT	1	17	43	17	14	8	
The Arts	2	14	44	24	10	5	
H&PE	2	15	37	26	15	5	
Civics & Citizenship	3	24	34	22	12	5	

Notes: <sup>1</sup> If schools provided percentages only, it is not possible to report the number of students assessed. In these cases, the total percentage (100) will be shown.

\* 2008 benchmarks will be calculated in August, when data from all schools has been submitted.

# Teacher Assessment of Student Progress (PSD students)

School no: 1183  
 School name: Williamstown Primary School



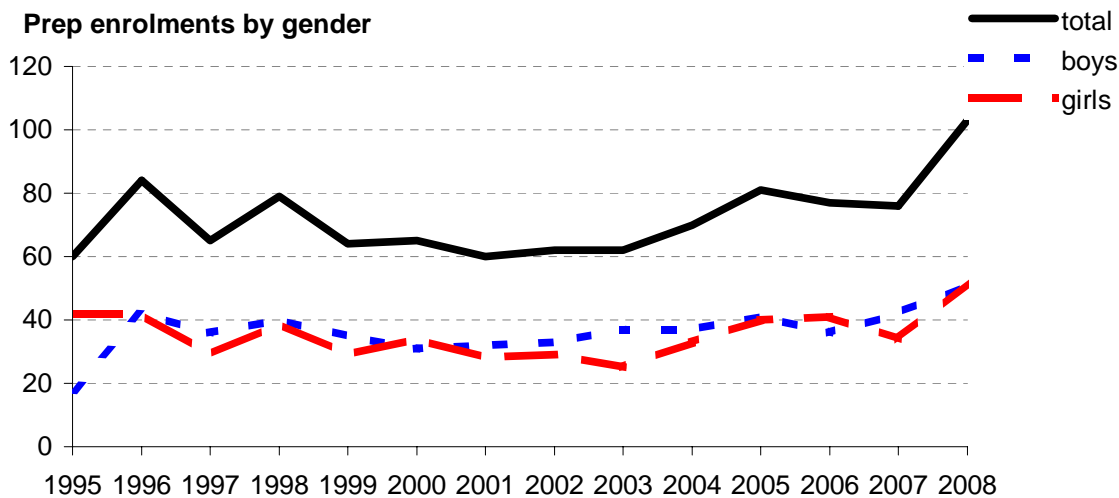
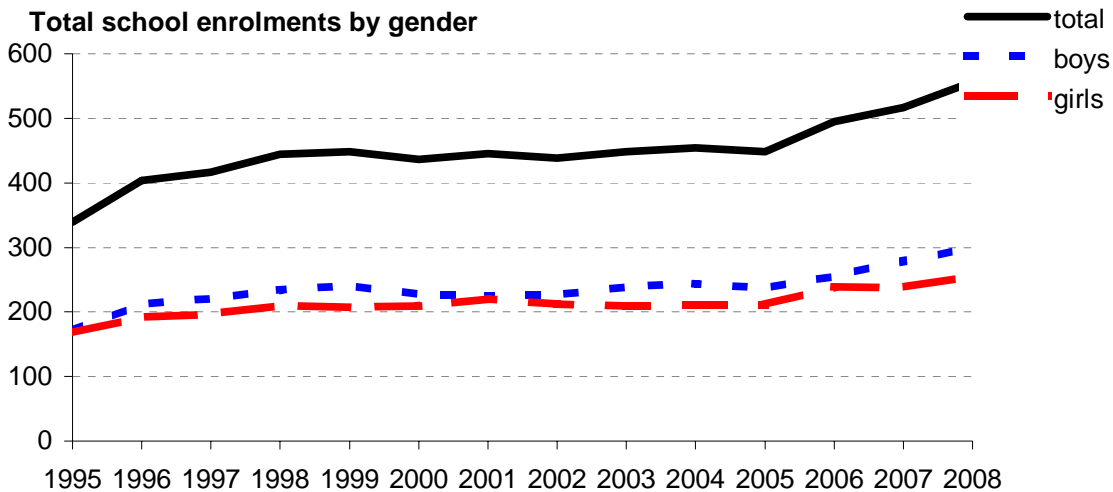
- 2004 (by CSF KLA)
- 2005 (by CSF KLA)
- 2006 (by VELS Domain)
- 2007 (by VELS Domain)
- 2008 (by VELS Domain)
- 2007 Primary state benchmarks (by VELS Domain)\*

Notes: \* 2008 benchmarks will be calculated in August, when data from all schools has been submitted.

# Enrolments

**School no:** 1183  
**School name:** Williamstown Primary School  
**Explanation:** Enrolments at February census.  
**Source of data:** February census.

Year	Total school enrolment			Prep enrolment			Year 7 enrolments		
	boys	girls	total	boys	girls	total	boys	girls	total
1995	171	168	339	18	42	60			
1996	212	192	404	42	42	84			
1997	221	196	417	36	29	65			
1998	234	210	444	40	39	79			
1999	241	207	448	35	29	64			
2000	227	209	436	31	34	65			
2001	225	220	445	32	28	60			
2002	226	212	438	33	29	62			
2003	239	209	448	37	25	62			
2004	244	210	454	37	33	70			
2005	237	211	448	41	40	81			
2006	256	239	495	36	41	77			
2007	279	238	517	42	34	76			
2008	300	256	556	51	52	103			



# Student Absence

School no: 1183

School name: Williamstown Primary School

Source of data: Data retrieved electronically from CASES21.

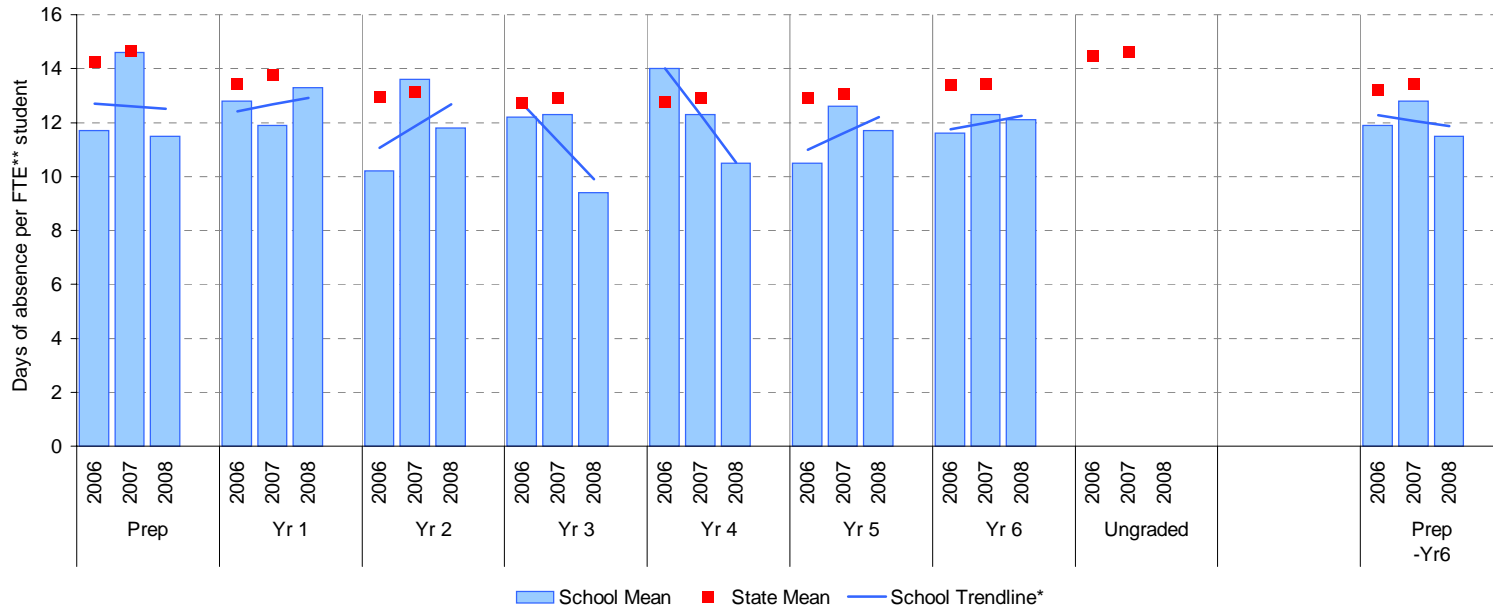
Explanation: The average (mean) number of absent days† per FTE\*\* student.

Note that 20 absent days equates to 1 absent day per fortnight, and 10 absent days to 1 absent day per month.

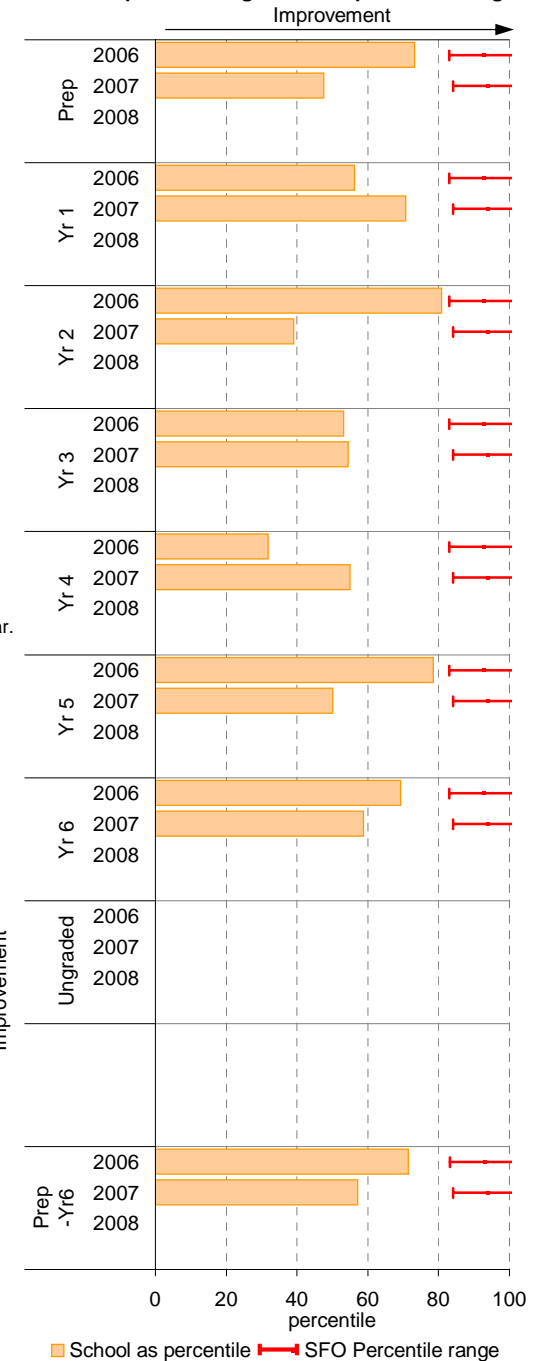
	School						2007 state benchmark^		
	2006		2007		2008		25th ptile	Mean	75th ptile
	Enrolments	Avg absent days / FTE** student	Enrolments	Avg absent days / FTE** student	Enrolments	Avg absent days / FTE** student			
Prep	80.5	11.7	76.4	14.6	103.3	11.5	12.0	14.6	17.7
Yr 1	83.2	12.8	80.9	11.9	77.2	13.3	11.5	13.8	16.1
Yr 2	67.3	10.2	82.7	13.6	84.1	11.8	11.0	13.1	15.1
Yr 3	70.2	12.2	67.1	12.3	82.9	9.4	10.8	12.9	14.9
Yr 4	65.8	14	72.7	12.3	72.3	10.5	10.8	12.9	15.0
Yr 5	62.9	10.5	73.1	12.6	72.6	11.7	10.6	13.1	15.0
Yr 6	69.2	11.6	64.9	12.3	69.5	12.1	11.0	13.4	15.7
Ungraded								14.6	
P-6 mean		11.9		12.8		11.5		13.4	

Notes: † Includes non-curriculum absences only (absence codes 200, 201, 202, 203, 205, 206, 207, 208, 209, 210, 211, 300, 401, 500, 700, 800, 804, 805, 900).  
 \* The school trendline is only plotted when there is data for each calendar year.  
 \*\* FTE = Full Time Equivalent (including part-time and part-year fractions).  
 ^ 2008 benchmarks and percentiles will be calculated in August, when data from all schools has been submitted.

School Mean against State Mean^



School Mean as percentile against SFO percentile range^



# Parent Opinion

School no: 1183

School name: Williamstown Primary School

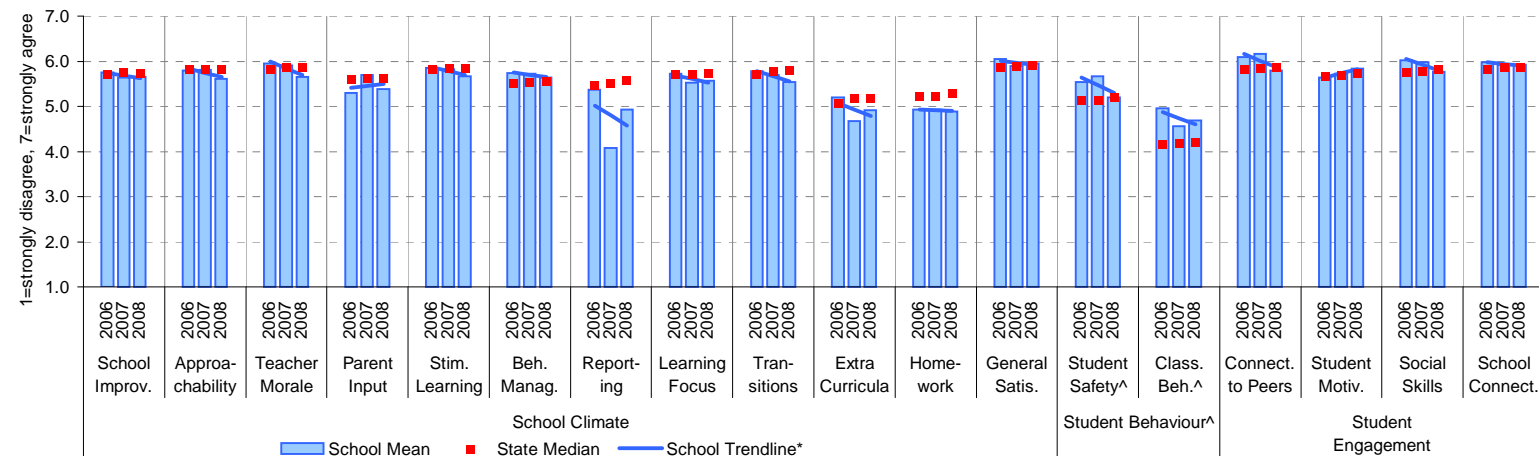
Explanation: A self-completion questionnaire to obtain parents' opinions of the school. Parents rated a number of statements using a scale where 1=strongly disagree & 7=strongly agree. The statements were grouped into the following categories.

Source of data: Data scanned from questionnaires completed by parents.

Variable No. Name	Year	School mean	State Primary median
1 School Improvement	2006	5.75	5.71
	2007	5.64	5.75
	2008	5.65	5.74
2 Approachability	2006	5.80	5.81
	2007	5.80	5.82
	2008	5.62	5.83
3 Teacher Morale	2006	5.96	5.82
	2007	5.90	5.86
	2008	5.66	5.85
4 Parent Input	2006	5.30	5.59
	2007	5.69	5.62
	2008	5.38	5.62
5 Stimulating Learning	2006	5.85	5.81
	2007	5.83	5.84
	2008	5.67	5.84
6 Behaviour Management	2006	5.74	5.51
	2007	5.72	5.54
	2008	5.64	5.55
7 Reporting	2006	5.38	5.45
	2007	4.08	5.51
	2008	4.93	5.56
8 Learning Focus	2006	5.73	5.71
	2007	5.52	5.72
	2008	5.57	5.73
9 Transitions	2006	5.78	5.72
	2007	5.69	5.76
	2008	5.55	5.79
10 Extra Curricula	2006	5.20	5.07
	2007	4.67	5.17
	2008	4.91	5.19
11 Homework	2006	4.93	5.23
	2007	4.93	5.23
	2008	4.89	5.28
12 General Satisfaction	2006	6.05	5.87
	2007	5.89	5.88
	2008	5.95	5.91
13 Student Safety^	2006	5.54	5.13
	2007	5.67	5.12
	2008	5.20	5.20
14 Classroom Behaviour^	2006	4.96	4.15
	2007	4.55	4.18
	2008	4.69	4.20

Variable No. Name	Year	School mean	State Primary median
15 Connectedness to Peers	2006	6.09	5.83
	2007	6.16	5.83
	2008	5.79	5.85
16 Student Motivation	2006	5.64	5.66
	2007	5.72	5.69
	2008	5.83	5.72
17 Social Skills	2006	6.03	5.76
	2007	5.98	5.78
	2008	5.77	5.81
18 School Connectedness	2006	5.98	5.83
	2007	5.92	5.85
	2008	5.92	5.86

## School Mean against Primary State Mean



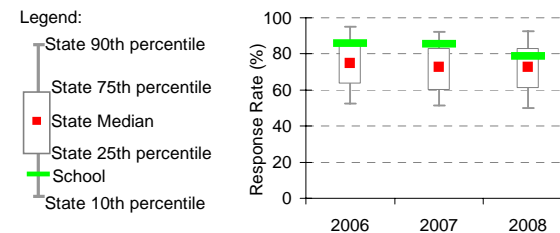
Notes: \* The school trendline is plotted when there is data for each calendar year.

^ Benchmarks available for Primary, Secondary, Pri/Sec, Special and SDS schools.

\*\* If there were 6 or less respondents, table data is not shown for confidentiality reasons. If there were 3 or less respondents, graph data is not shown for confidentiality reasons.

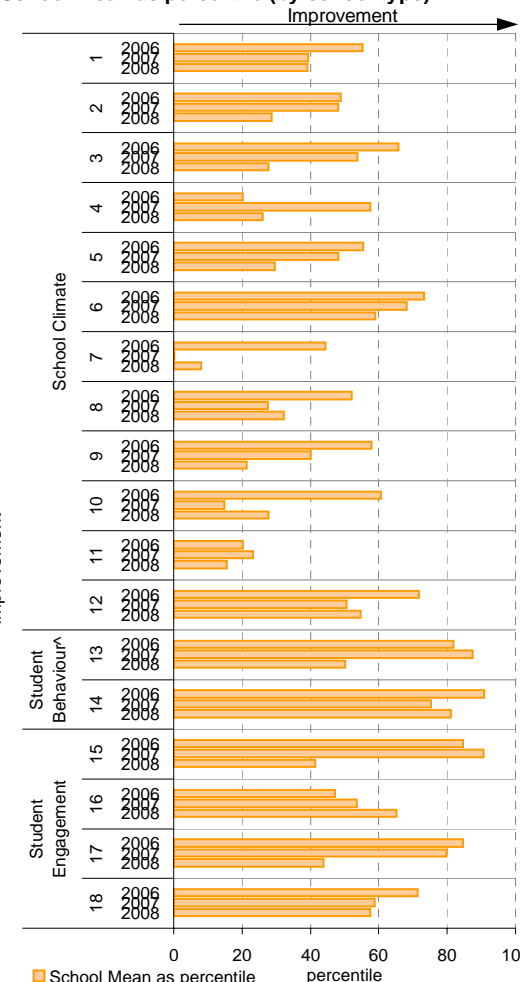
^ Parents' responses to all negatively phrased questions have been reversed for reporting purposes. Across all variables, the higher the score or percentile rank, the more positive parents' perceptions.

## School response rate\*\* against Primary school distribution



Year	No. of respondents	No. invited	Response Rate
2006	61	71	85.9%
2007	64	75	85.3%
2008	66	84	78.6%

## School Mean as percentile (by school type)



# Staff Opinion

School no: 1183

School name: Williamstown Primary School

Explanation: A self-completion questionnaire to obtain the staff's opinions of the school. The survey was administered online using the School Organisational Health Questionnaire.

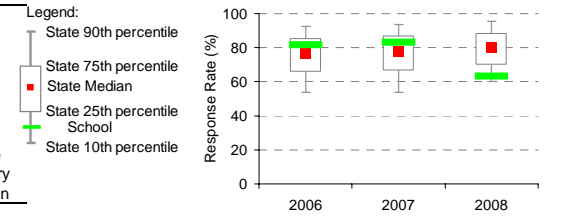
Source of data: Data transmitted from school staff to DEECD via an online survey application.

Variable	No.	Name	Year	School mean	State Primary median
1 Individual Morale			2006	81.9	75.6
			2007	74.2	76.8
			2008	79.1	78.1
2 School Morale			2006	85.1	78.1
			2007	77.7	79.2
			2008	84.7	80.8
3 Supportive Leadership			2006	85.1	80.0
			2007	73.7	80.6
			2008	82.8	82.2
4 Role Clarity			2006	83.2	79.6
			2007	75.6	80.1
			2008	79.9	81.3
5 Professional Interaction			2006	82.1	80.7
			2007	76.5	81.9
			2008	81.7	83.2
6 Participative Decision-Making			2006	78.6	75.1
			2007	69.6	76.3
			2008	78.8	77.4
7 Goal Congruence			2006	84.6	81.7
			2007	81.6	82.6
			2008	84.7	83.7

Variable	No.	Name	Year	School mean	State Primary median
8 Appraisal & Recognition			2006	74.8	71.6
			2007	64.9	73.1
			2008	68.2	75.0
9 Professional Growth			2006	73.3	74.2
			2007	67.4	76.0
			2008	67.6	76.9
10 Curriculum Coordination			2006	75.2	75.0
			2007	74.4	75.6
			2008	79.2	77.9
11 Effective Discipline Policy			2006	84.3	79.9
			2007	85.5	80.9
			2008	79.2	82.0
12 Student Orientation			2006	87.9	86.1
			2007	88.0	86.6
			2008	85.8	87.5
13 Student Motivation			2006	83.6	76.8
			2007	84.3	77.9
			2008	86.5	79.5
14 Student Decision-Making			2006	71.6	69.4
			2007	66.6	71.3
			2008	78.5	72.9

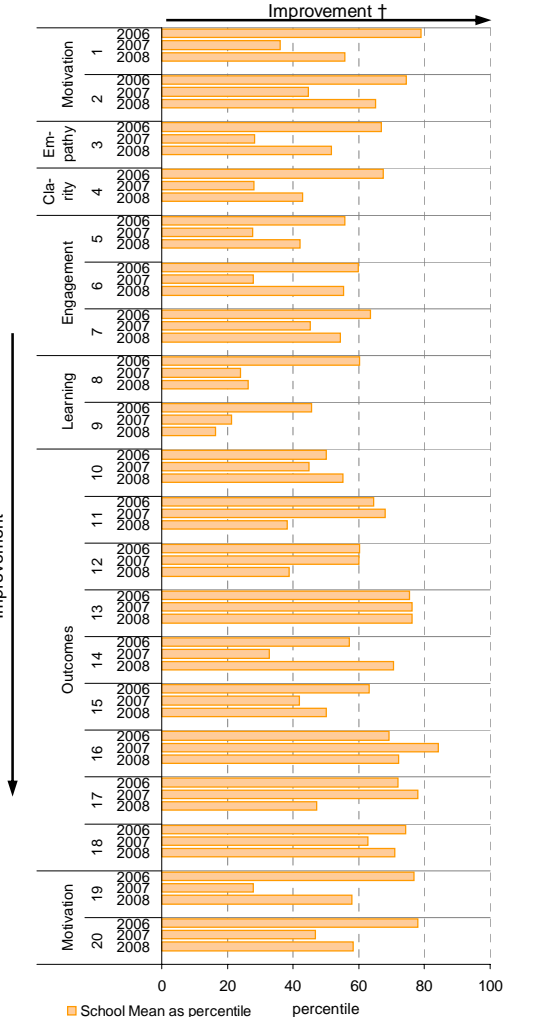
Variable	No.	Name	Year	School mean	State Primary median
15 Learning Environment			2006	84.1	81.3
			2007	81.3	82.5
			2008	84.1	84.1
16 Student Misbehaviour			2006	14.9	21.7
			2007	10.1	21.5
			2008	12.1	20.0
17 Classroom Misbehaviour			2006	10.5	13.8
			2007	9.3	13.3
			2008	13.0	12.6
18 Excessive Work Demands			2006	33.9	42.9
			2007	38.1	43.2
			2008	33.3	41.7
19 Individual Distress			2006	15.8	21.6
			2007	25.8	21.1
			2008	18.4	20.0
20 School Distress			2006	18.6	28.8
			2007	29.6	28.3
			2008	23.9	26.7

## School response rate\*\* against Primary school distribution

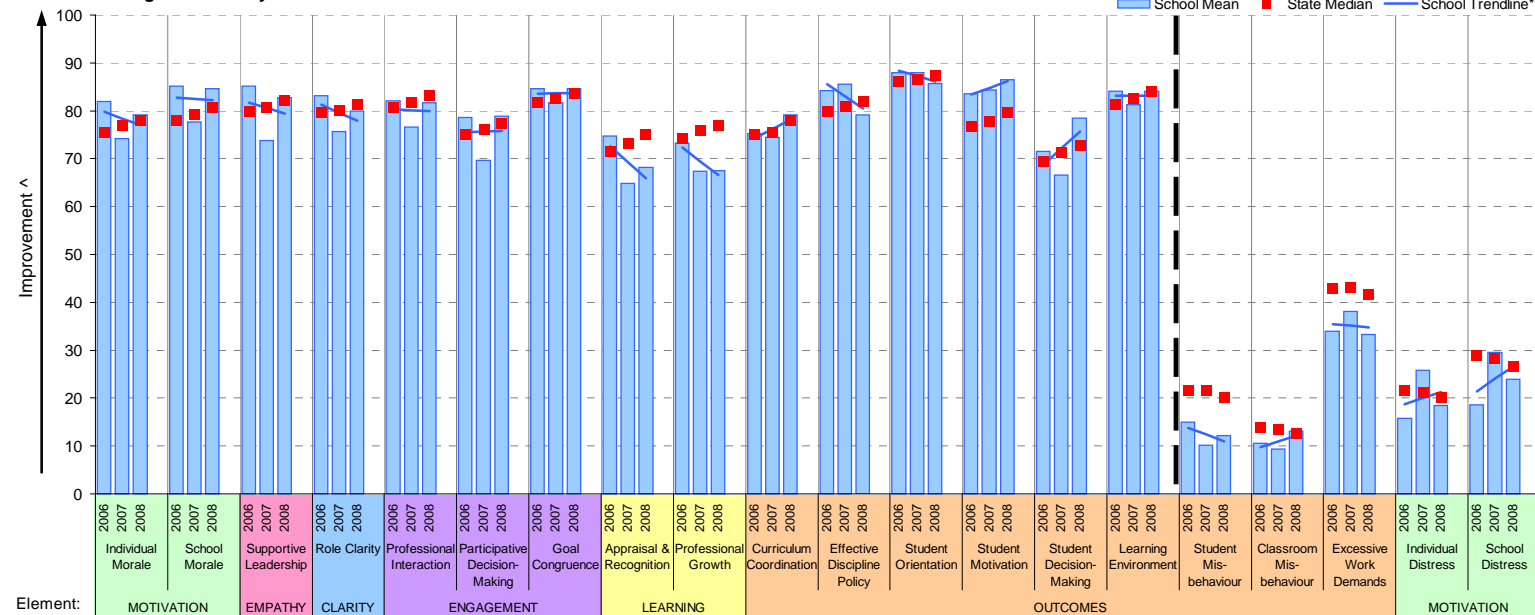


Year	No. of respondents	No. invited	Response Rate
2006	35	43	81%
2007	39	47	83%
2008	31	49	63%

## School Mean as percentile (by school type)



## School Mean against Primary State Median



Notes: \* The school trendline is being trialled. It is only plotted when there is data for each calendar year.

\*\* If there were 6 or less respondents, table data is not shown for confidentiality reasons. If there were 3 or less respondents, graph data is not shown for confidentiality reasons.

^ The higher the school mean, the more positive the outcome for variables 1 to 15. The lower the school mean, the more positive the outcome for variables 16 to 20.

† The higher the school percentile, the more positive the outcome for all variables.

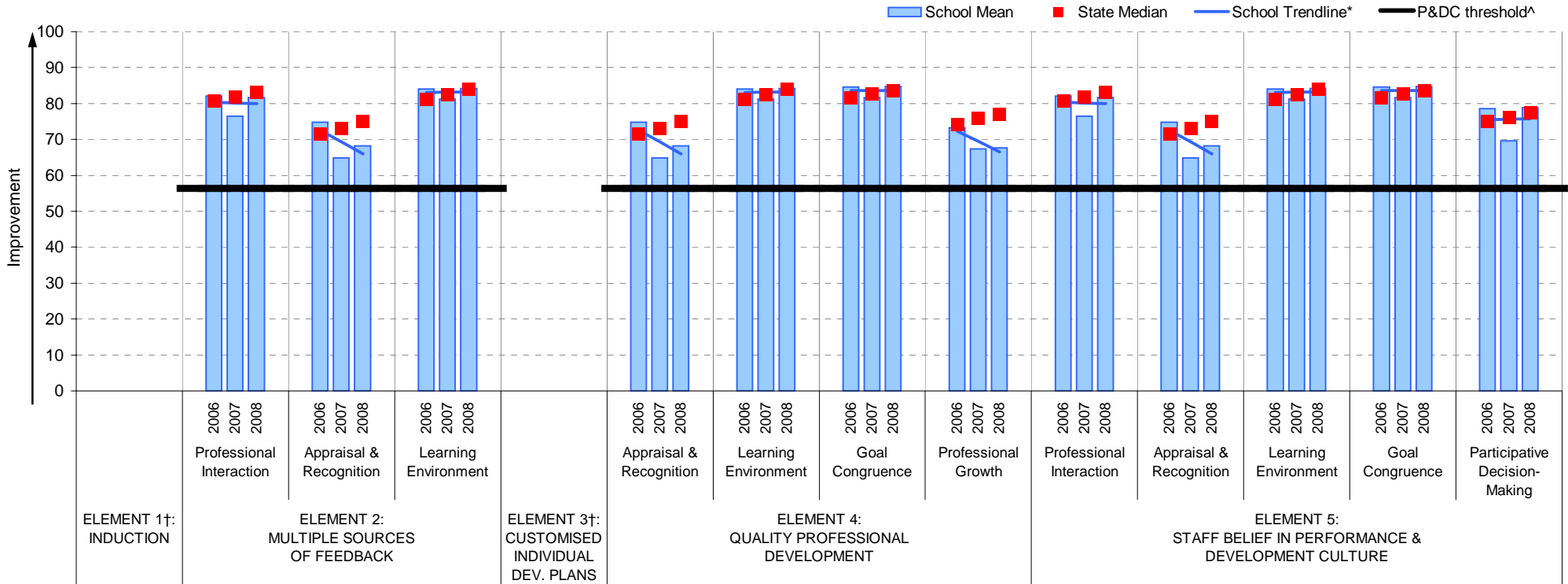
^^ Benchmarks are available for Primary, Secondary, Pri/Sec, Special & SDS schools.

# Performance & Development Culture (P&DC)<sup>††</sup>

NEW

**School no:** 1183  
**School name:** Williamstown Primary School  
**Explanation:** The data on this page refers to the Staff Opinion Survey.  
**Source of data:** Data transmitted from school staff to DEECD via an online survey application.

## School Mean against Primary State Median



- Notes:
- †† An assessment of the correlation between the P&DC Questionnaire and the Staff Opinion Survey was undertaken using data from Victorian Government schools that completed both surveys from 2005 to 2007 (ie. 699 schools). This led to the identification of the components of the Staff Opinion Survey that could be used to assist schools with the ongoing monitoring of their performance and development culture. Refer to the P&DC website for further information: <http://www.education.vic.gov.au/management/schoolimprovement/panddc/default.htm>. For numerical results relating to the above graph, refer to the Staff Opinion Survey page in this report.
  - † Note that there is no significant correlation between the Staff Opinion Survey and P&DC elements 1 (Induction) and 3 (Customised Individual Development Plans).
  - ^ The P&DC threshold was derived from the P&DC Questionnaire 'percent favourable' methodology where a school is considered at the standard of accreditation when their Element score is >75% favourable (ie. at least 75% of staff selected the top two response categories in the P&DC Questionnaire).
  - \* The school trendline is only plotted when there is data for each calendar year.
  - \*\* If there were 3 or less respondents, graph data is not shown for confidentiality reasons.
  - ^^ Benchmarks are available for Primary, Secondary, Pri/Sec, Special & SDS schools.

# Staff Sick Leave

**School no:** 1183

**School name:** Williamstown Primary School

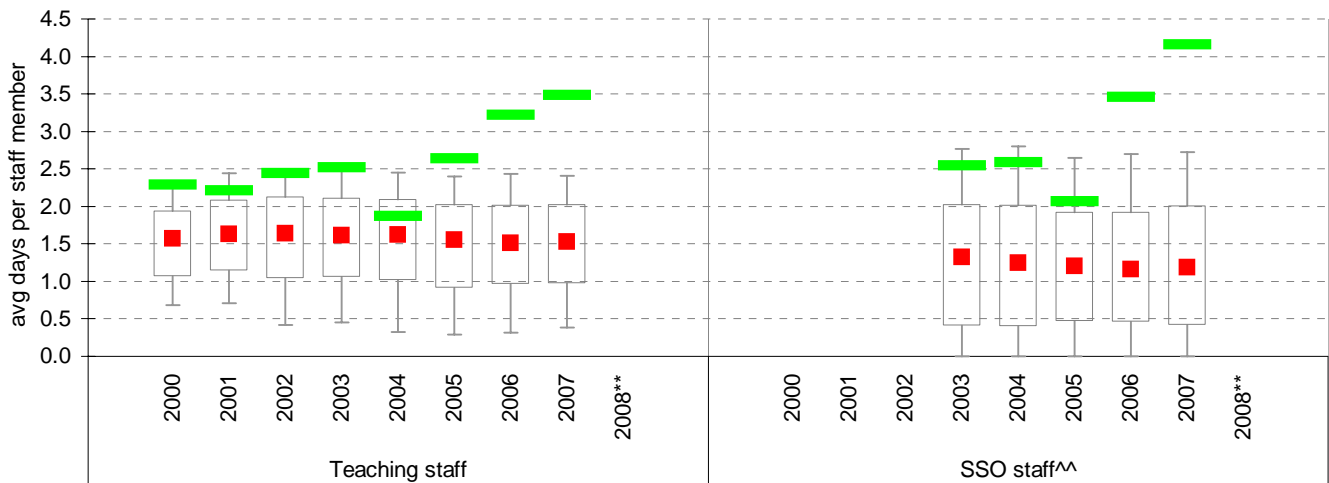
**Explanation:** The number of non-certificated and total sick leave days taken per staff member. A detailed explanation on how staff sick leave is calculated is provided in the Annual Reports Frequently Asked Questions page of the Standards website (<http://www.sofweb.vic.edu.au/standards/account/arepq.htm>).

**Source of data:** Human Resources Management System (HRMS)^.

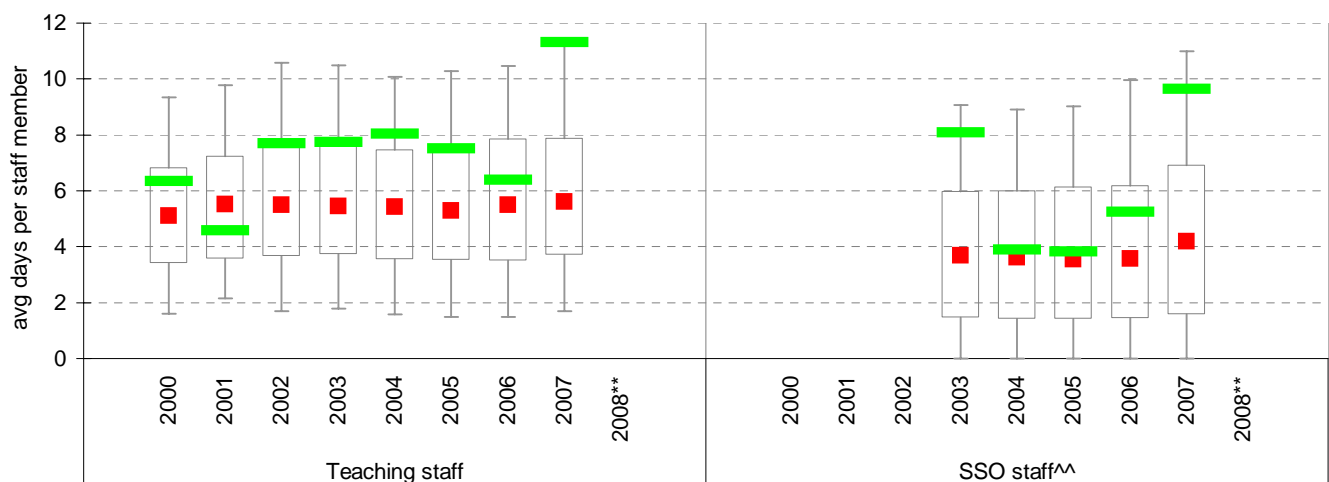
Staff Type	Non-Certificated sick leave days per staff member^									2007 State Median**
	2000	2001	2002	2003	2004	2005	2006	2007	2008**	
Teacher	2.29	2.22	2.45	2.52	1.87	2.64	3.22	3.48		1.53
SSO^^					2.59	2.07	3.46	4.15		1.19

Staff Type	Total sick leave days per staff member^									2007 State Median**
	2000	2001	2002	2003	2004	2005	2006	2007	2008**	
Teacher	6.33	4.59	7.68	7.74	8.03	7.52	6.39	11.31		5.61
SSO^^					3.89	3.82	5.25	9.65		4.20

## NON-CERTIFICATED sick leave



## TOTAL sick leave

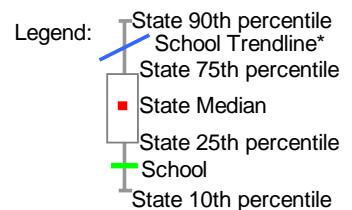


Note: \* The school trendline is only plotted when there is data for each calendar year.

\*\* Data for 2008 will be available in April / May of 2009.

^ There may be some discrepancy between the results from CASES & those from HRMS. The latter are considered to be more accurate.

^^ Data for SSO (School Services Officer) staff is only available from 2003.



## Teaching Staff Retention

**School no:** 1183

**School name:** Williamstown Primary School

**Explanation:** The retention rate of teaching staff is determined by matching staff payroll records for the last pay in June of one year (Year A), to the last pay in June of the following year (Year B).

**Source of data:** Human Resources Management System (HRMS).

### Teaching Staff\*

Year A	Year B	Number of Teaching Staff in Year A	Number of Teaching Staff retained in Year B	Teaching Staff Retention Rate	Statewide Average
2005	2006	33	31	94%	87%
2006	2007	33	32	97%	86%
2007	2008	37	33	89%	84%

Of the 33 teaching service staff at June 2005 (including those on leave without pay), 31 or 94% were still at the school at June 2006. This figure across all Government schools was 87%.

Of the 33 teaching service staff at June 2006 (including those on leave without pay), 32 or 97% were still at the school at June 2007. This figure across all Government schools was 86%.

Of the 37 teaching service staff at June 2007 (including those on leave without pay), 33 or 89% were still at the school at June 2008. This figure across all Government schools was 84%.

### Ongoing Teaching Staff\*^

Year A	Year B	Number of Ongoing Teaching Staff in Year A	Number of Ongoing Teaching Staff retained in Year B	Ongoing Teaching Staff Retention Rate	Statewide Average
2005	2006	29	28	97%	91%
2006	2007	32	32	100%	90%
2007	2008	29	27	93%	88%

Of the 29 ongoing teaching service staff at June 2005 (including those on leave without pay), 28 or 97% were still at the school at June 2006. This figure across all Government schools was 91%.

Of the 32 ongoing teaching service staff at June 2006 (including those on leave without pay), 32 or 100% were still at the school at June 2007. This figure across all Government schools was 90%.

Of the 29 ongoing teaching service staff at June 2007 (including those on leave without pay), 27 or 93% were still at the school at June 2008. This figure across all Government schools was 88%.

Notes: \* Teaching staff includes Principal class, Teacher class and Instructor class. Teaching staff employed as visiting teachers, guidance officers, curriculum consultants, etc. are excluded as they are not charged to a particular school.

^ Not including fixed term staff, except for where staff had changed from ongoing in Year A to fixed term in Year B.

# Bank Balances

**School no:** 1183

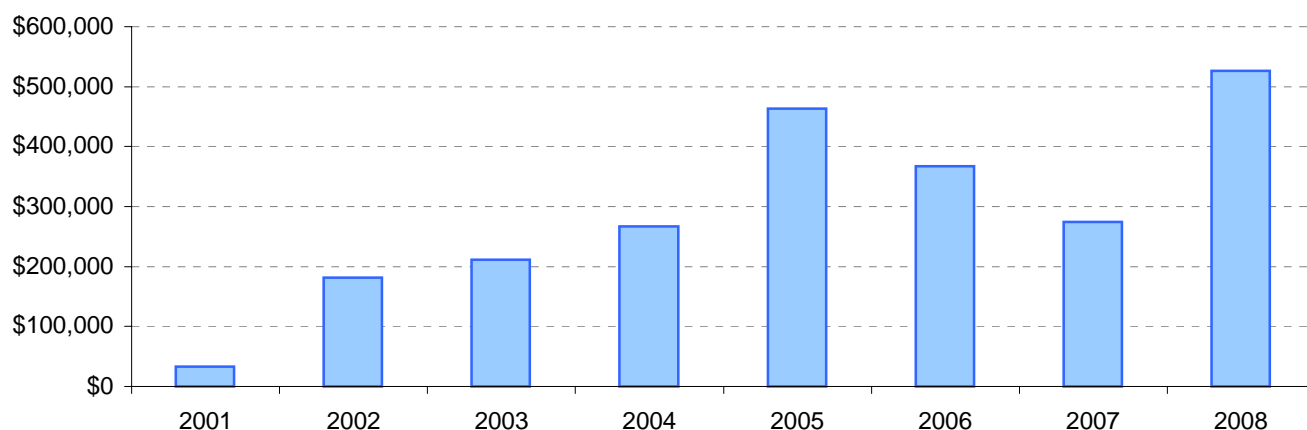
**School name:** Williamstown Primary School

**Explanation:** Account balance figures include official and investment accounts, and are calculated by taking the opening balance at 1st January plus the total receipts at 31st December less total payments at 31st December.

## Account Balances (Official plus Investment Accounts)

2001	\$33,136	2005	\$463,373
2002	\$181,557	2006	\$367,699
2003	\$211,796	2007	\$274,403
2004	\$267,431	2008	\$526,006

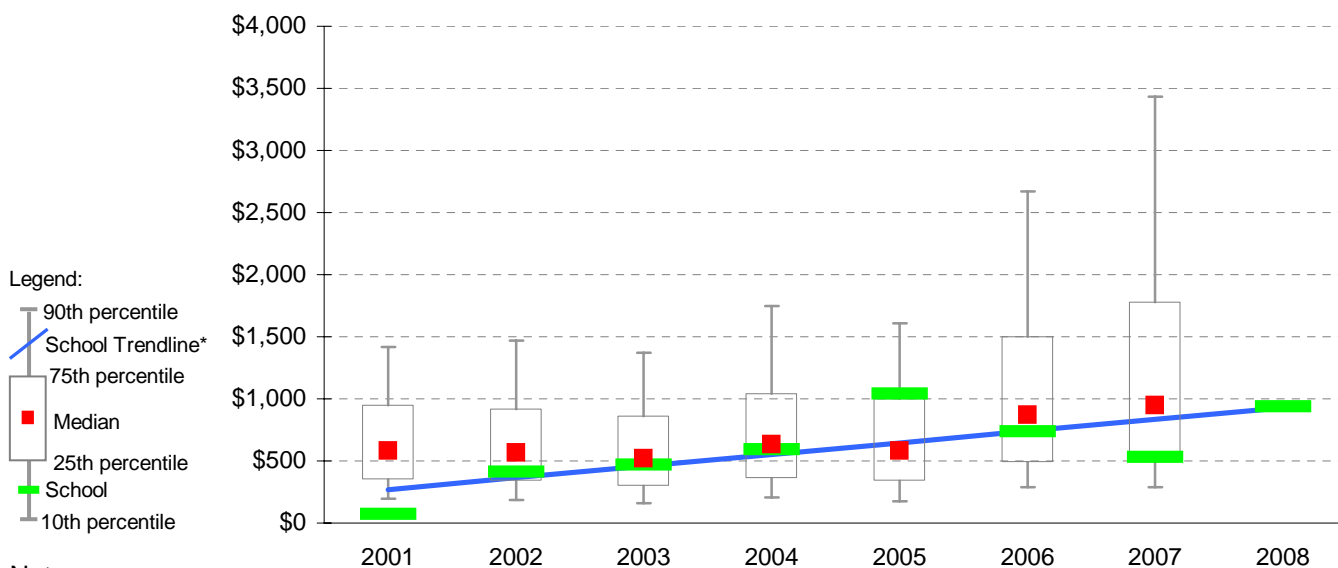
### Account Balances



## Account Balances (Official plus Investment Accounts) per student<sup>†</sup>

2001	\$75	2005	\$1,039
2002	\$410	2006	\$737
2003	\$470	2007	\$533
2004	\$592	2008	\$937

### School account balances per student enrolled in August census plotted on state Primary benchmarks<sup>^</sup>



#### Notes:

\* The school trendline is being trialled. It is only plotted when there is data for each calendar year.

† The account balance per student has been calculated to enable some comparison to be made between schools.

^ Benchmarks for primary, secondary, pri/sec, SDS, special and language schools.